



MISSOURI BICYCLE AND  
PEDESTRIAN FEDERATION

# Safe Routes to School Funding in Underserved Communities

*Are Your Underserved Communities Receiving Their  
Fair Share of SRTS Funding?*

Brent Hugh

Eric Bunch

Sarah Shipley

Missouri Safe Routes to School Network

[MoBikeFed.org/UnderservedCommunities](http://MoBikeFed.org/UnderservedCommunities)



# SRTS & Underserved Communities

*Are underserved communities  
in Missouri getting their fair  
share of SRTS funding?*

# SRTS & Underserved Communities

## Executive Order

*[E]ach Federal agency shall make achieving environmental justice part of its mission by identifying and addressing, as appropriate, disproportionately high and adverse human health or environmental effects of its programs, policies and activities on minority populations and low-income populations.*

The President's Order for Environmental Justice, Executive Order 12898



# SRTS & Underserved Communities

## USDOT Guidance

### Objective:

*To avoid, minimize, or mitigate disproportionately high and adverse human health and environmental effects, including social and economic effects, on minority populations and low-income populations . . .*

*An Overview of Transportation and Environmental Justice, U.S.  
Department of Transportation*



# SRTS & Underserved Communities

## USDOT Guidance

### Objective:

*To prevent the denial of, reduction in, or significant delay in the receipt of benefits by minority and low-income populations.*

*An Overview of Transportation and Environmental Justice, U.S.  
Department of Transportation*



# SRTS & Underserved Communities

- Defining “underserved”
- How did we collect the data?
- What did we discover?
- What can we do about it?



MISSOURI BICYCLE AND  
PEDESTRIAN FEDERATION

# Defining “Underserved”

- Low Income Students



# Defining “Underserved”

- Low Income Students
- Minority Students



# Defining “Underserved”

## Why these groups?

- Low-income and minority populations are at much greater risk of obesity and inactivity
- They are historically underserved by application based funding sources
- They tend to lack the parental involvement exhibited by affluent schools
- Fewer champions
- Specifically mentioned in Executive Order

# Defining “Underserved”

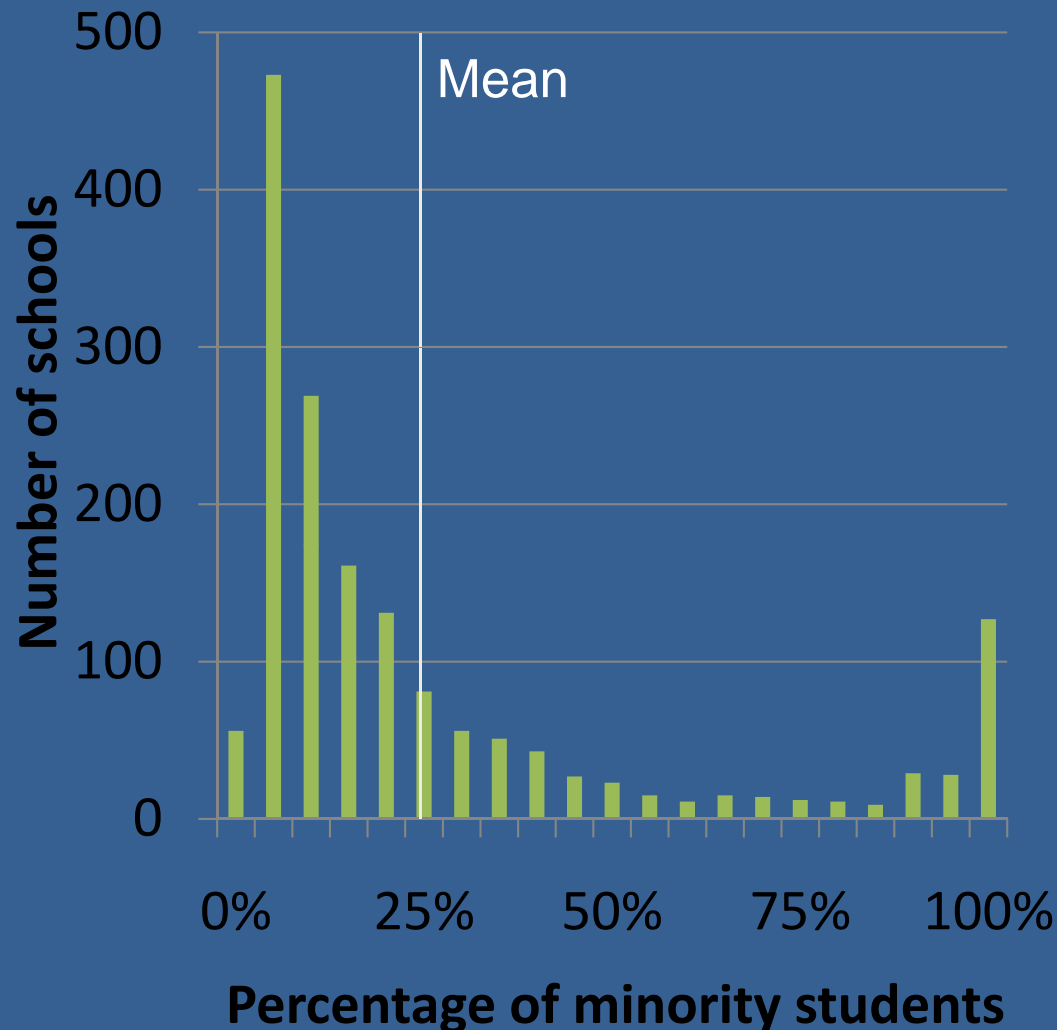
- Low Income Students - % free & reduced lunch eligible students
- Minority Students - % as reported by school



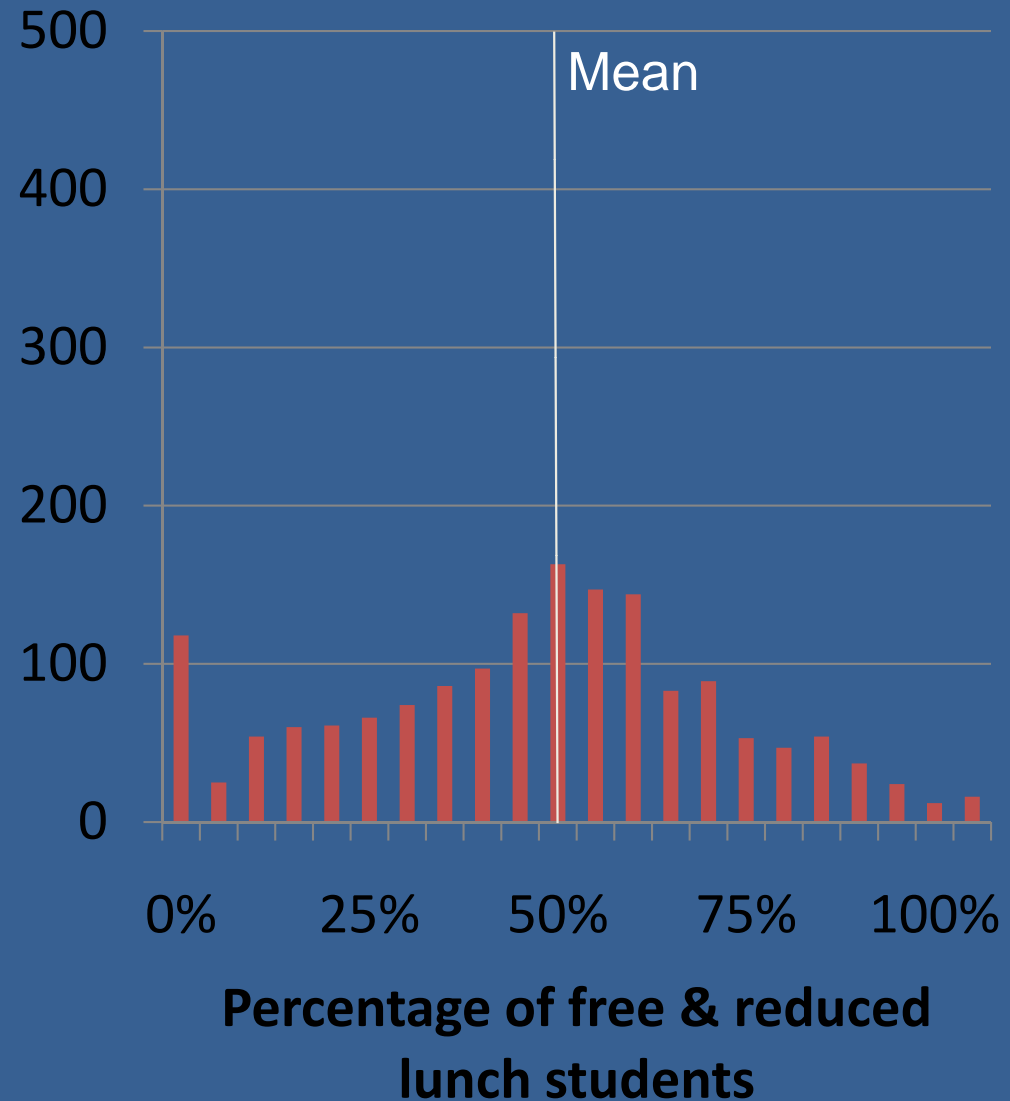
MISSOURI BICYCLE AND  
PEDESTRIAN FEDERATION

# Underserved: Poverty vs. Minority

## Minority



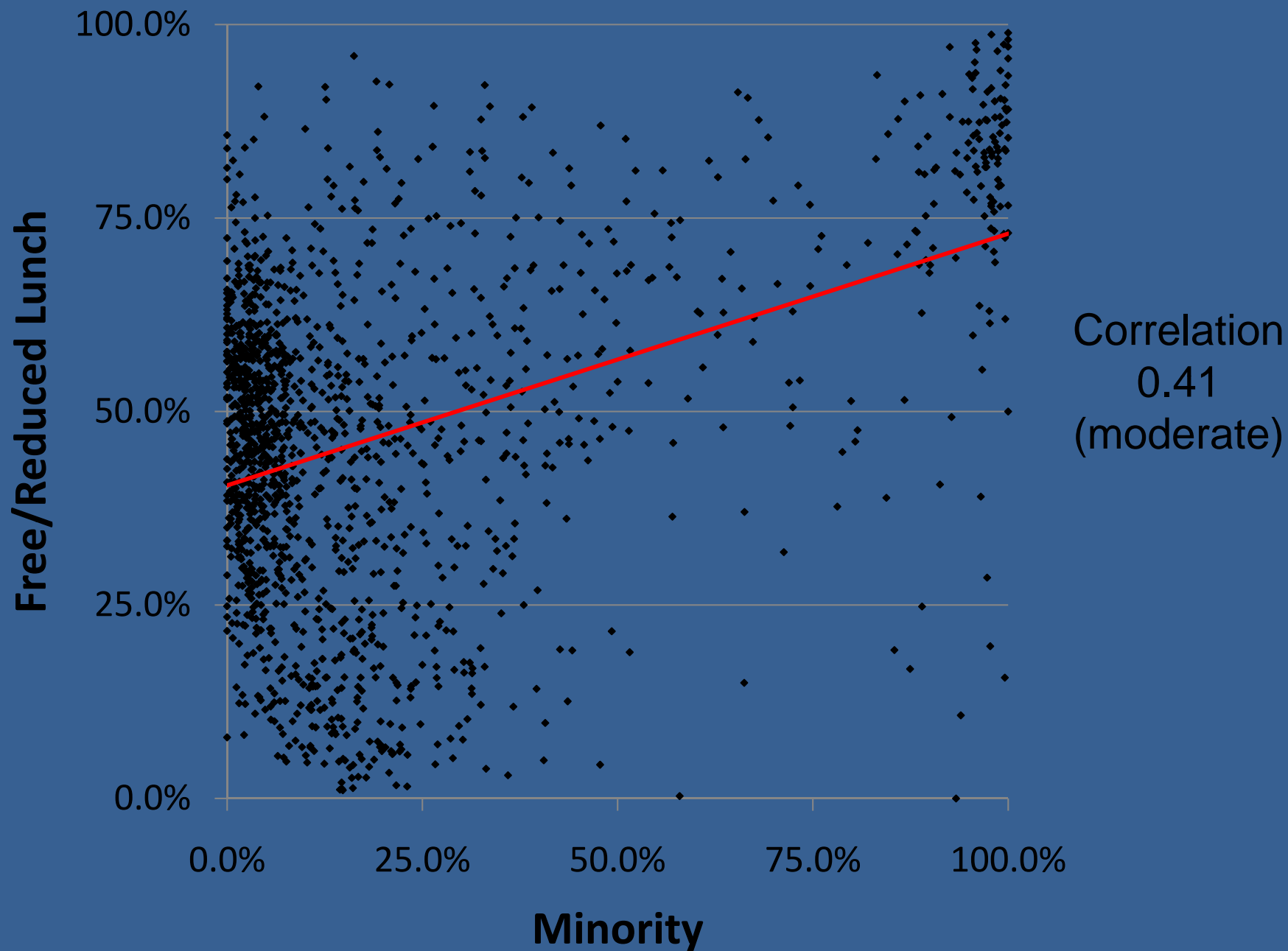
## Poverty





MISSOURI BICYCLE AND  
PEDESTRIAN FEDERATION

# Underserved: Poverty vs. Minority

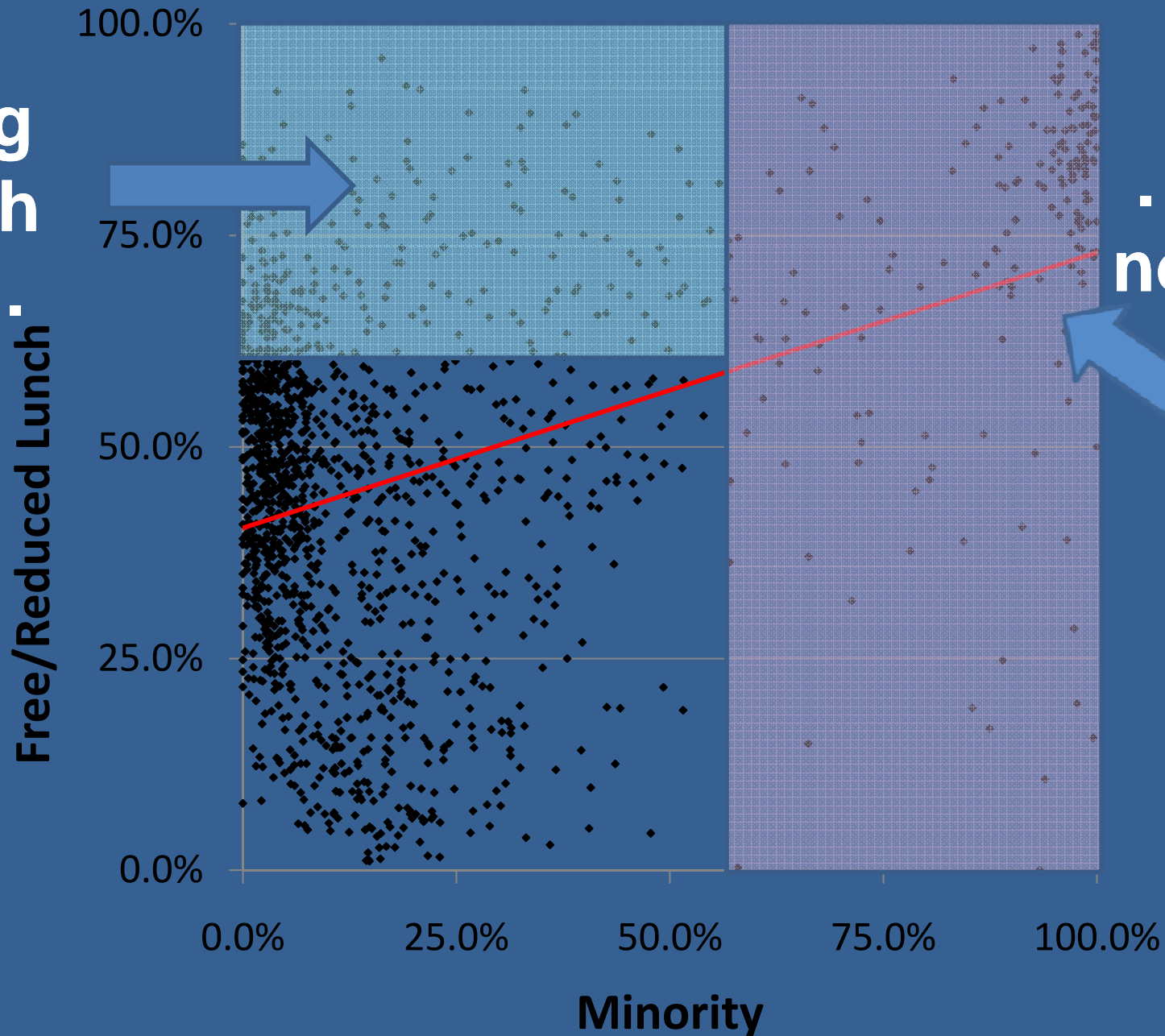




MISSOURI BICYCLE AND  
PEDESTRIAN FEDERATION

# Underserved: Poverty vs. Minority

We're  
starting  
to reach  
this . . .



... but  
not this



# The Data

## How we got the data

- General school data for the entire nation at <http://nces.ed.gov/ccd/>

URBAN- CENTRIC LOCALE (SCHOOL)	LOCALE - SIMPLIFIED	SCHOOL- WIDE TITLE I (SCHOOL)	TITLE I ELIGIBLE SCHOOL (SCHOOL)	CONGRES SIONAL CODE (SCHOOL)	TOTAL STUDENTS (SCHOOL)	TOTAL MINORITY STUDENTS	PERCENT MINORITY STUDENTS	AMERICAN INDIAN/ ALASKAN NATIVE STUDENTS (SCHOOL)	ASIAN/ PACIFIC ISLANDER STUDENTS (SCHOOL)(*)	BLACK STUDENTS (SCHOOL)	HISPANIC STUDENTS (SCHOOL)	WHITE STUDENTS (SCHOOL)	TWO/ MORE RACES STUDENTS (SCHOOL)	FRE LUN ELIGI (SCH
Town: Remote	Town		No	2908	527	200	38.0%	0	3	185	12	327		
Town: Remote	Town		No	2908	555	192	34.6%	1	2	180	9	363		
Town: Remote	Town	No	Yes	2909	321	16	5.0%	0	0	10	6	305		
Town: Remote	Town	Yes	Yes	2908	326	14	4.3%	0	0	8	6	312		
City: Large	City	No	Yes	2905	483	192	39.8%	5	16	154	17	291		
City: Large	City	No	Yes	2905	380	366	96.3%	0	0	366	0	14		
City: Large	City	Yes	Yes	2905	146	146	100.0%	0	0	146	0	0		
City: Large	City	Yes	Yes	2905	401	401	100.0%	0	1	400	0	0		

## How we got the data

- General school data for the entire nation at <http://nces.ed.gov/ccd/>
- List of Missouri SRTS awards from MoDOT
- Look up minority, free & reduced lunch data from NCES
- Specific instructions in handout

# The Data: How we analyzed it

## Low Income Students – schools with

- 0-25% free/reduced lunch
- 25%-50% free/reduced lunch
- 50%-75% free/reduced lunch
- 75%-100% free/reduced lunch

## Minority Students – schools with

- > State average (24.8% in Missouri)
- < State average





MISSOURI BICYCLE AND  
PEDESTRIAN FEDERATION

# The Data: How we analyzed it

Our question: Are these groups getting their fair share of SRTS funding?

- **Example: Schools in Missouri with greater than average minority population**
- **182,337 students in those schools**
- **30% of Missouri's school population**
- **Are these schools receiving 30% of Missouri's SRTS funding?**

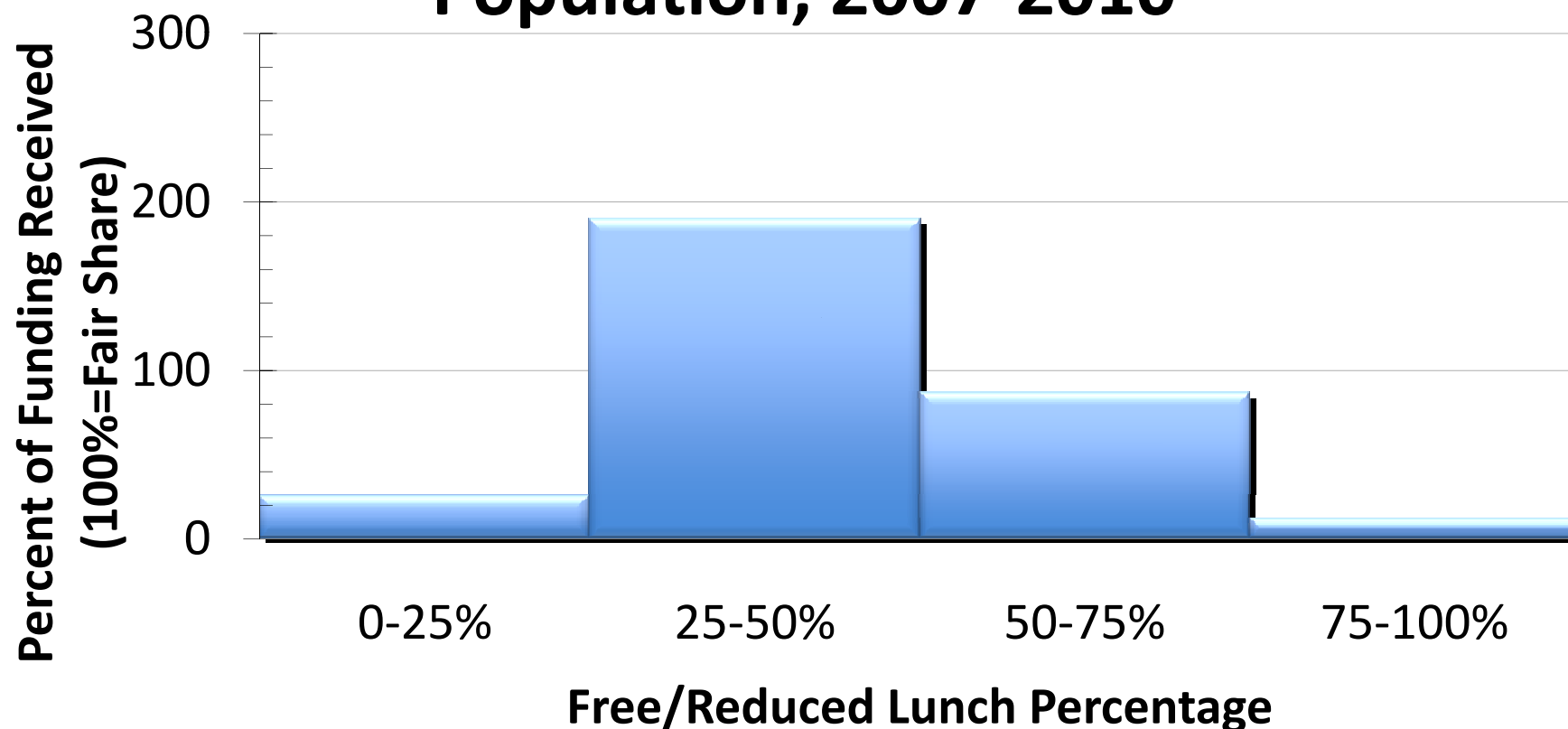




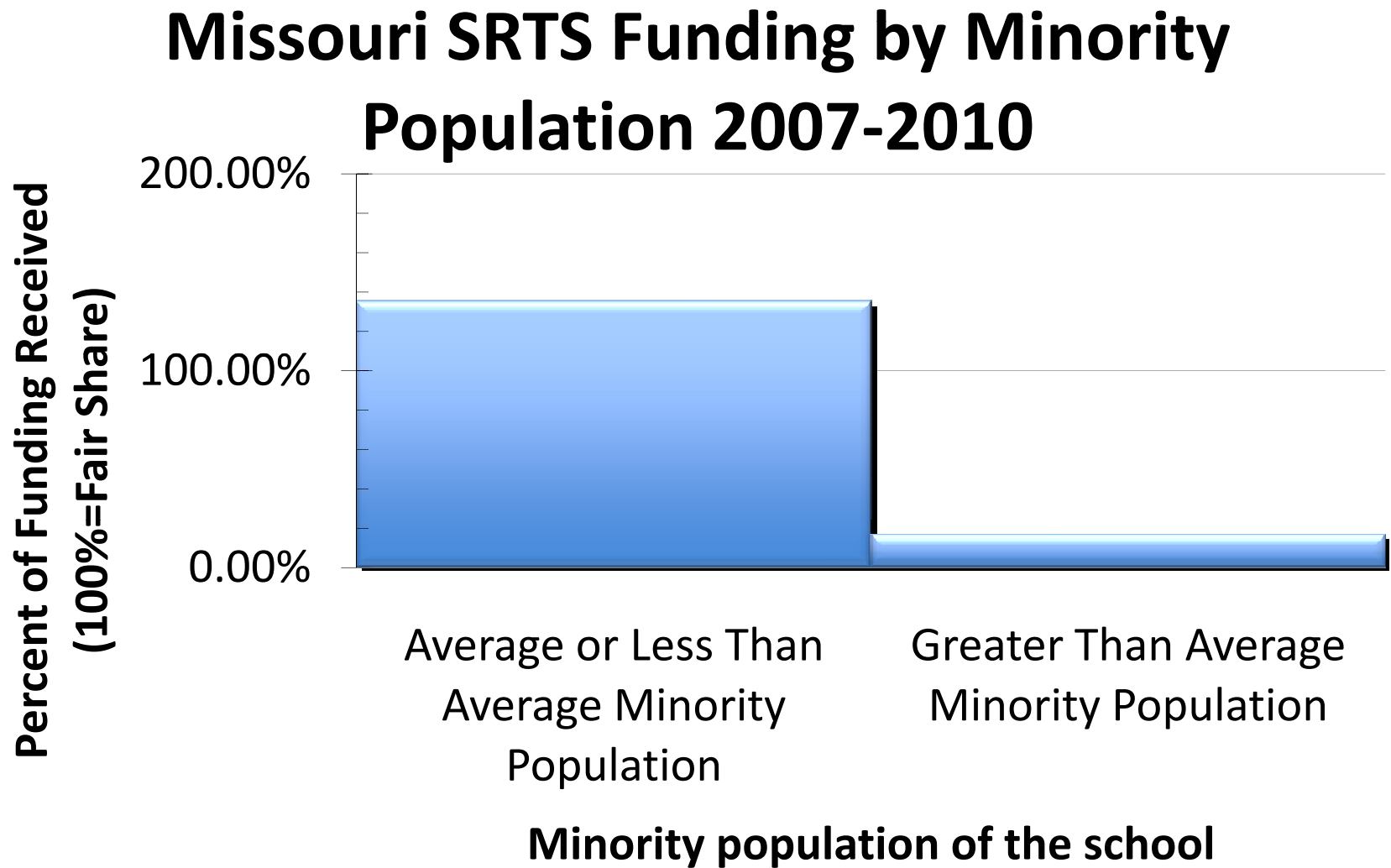
MISSOURI BICYCLE AND  
PEDESTRIAN FEDERATION

# Underserved Communities: Results

## Missouri SRTS Funding by Low Income Population, 2007-2010



# Underserved Communities: Results

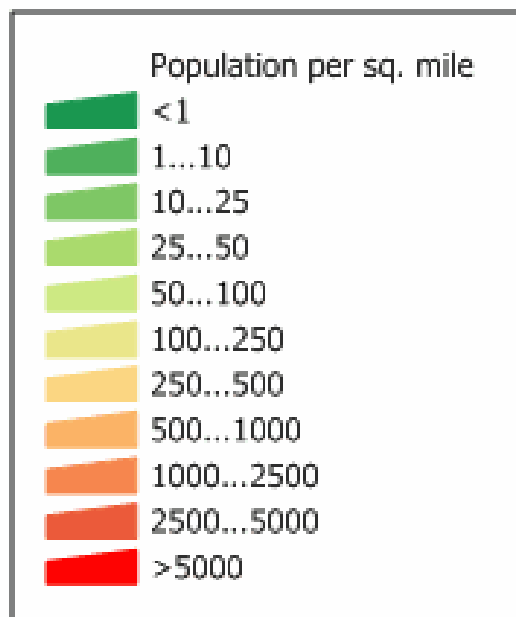




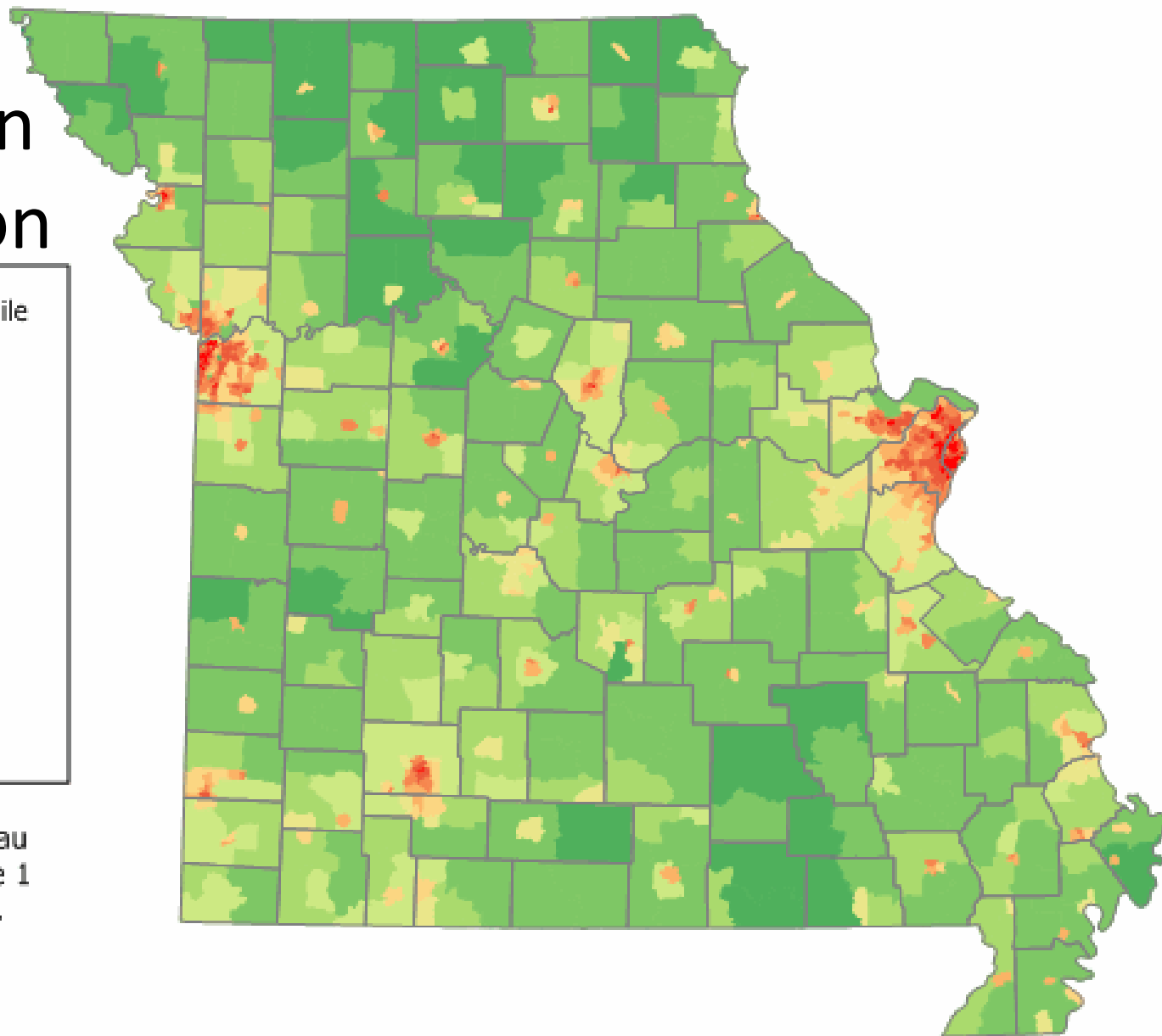
MISSOURI BICYCLE AND  
PEDESTRIAN FEDERATION

# Award Distribution

## Missouri Population Distribution



Source: U. S. Census Bureau  
Census 2000 Summary File 1  
population by census tract.

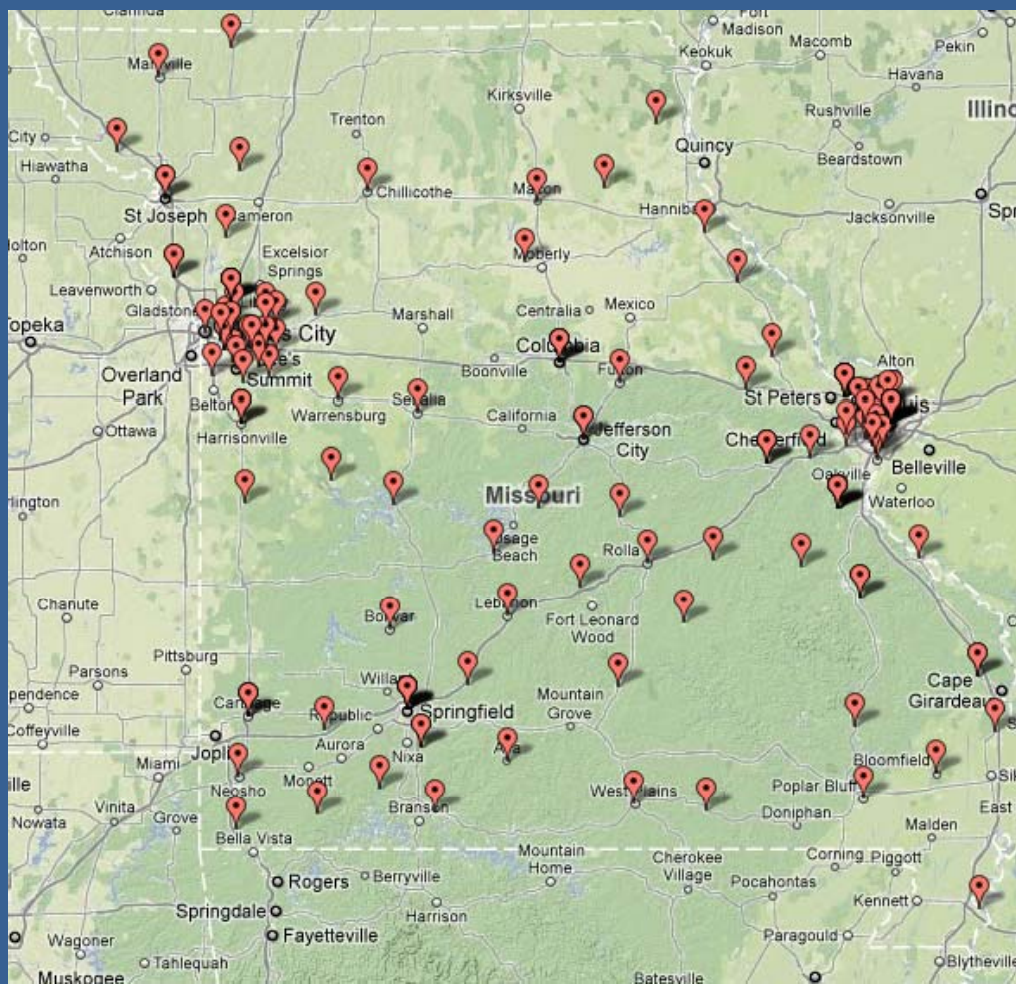




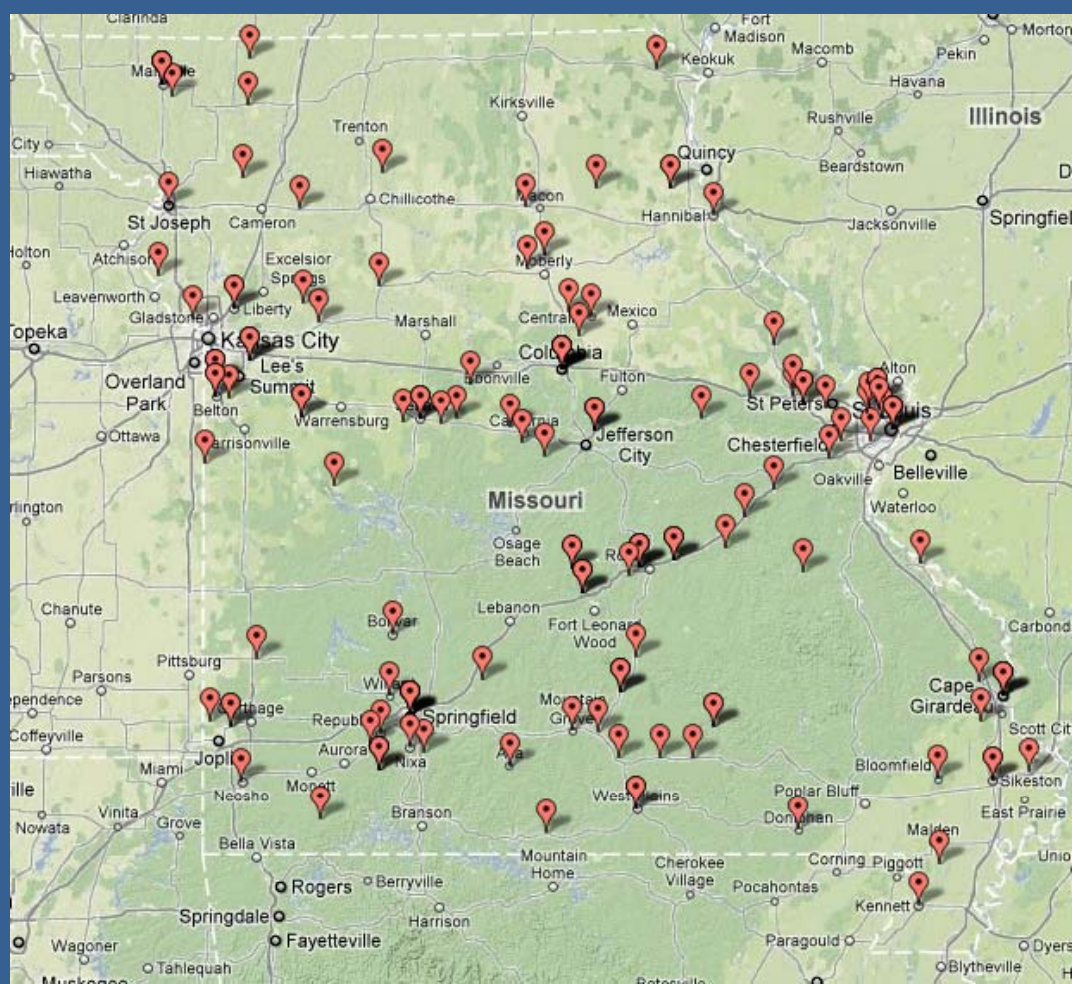
MISSOURI BICYCLE AND  
PEDESTRIAN FEDERATION

# Award Distribution

## By Population



## Actual Awards





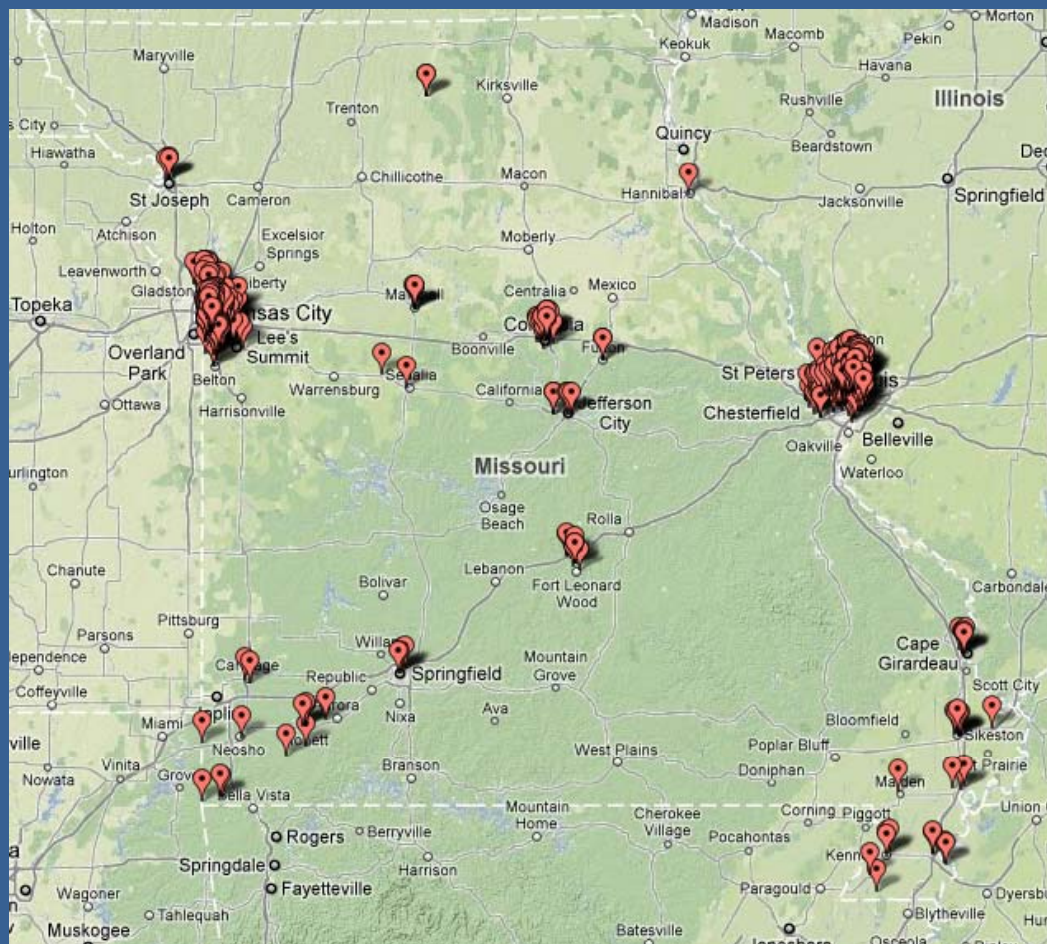


MISSOURI BICYCLE AND  
PEDESTRIAN FEDERATION

# Population Distribution

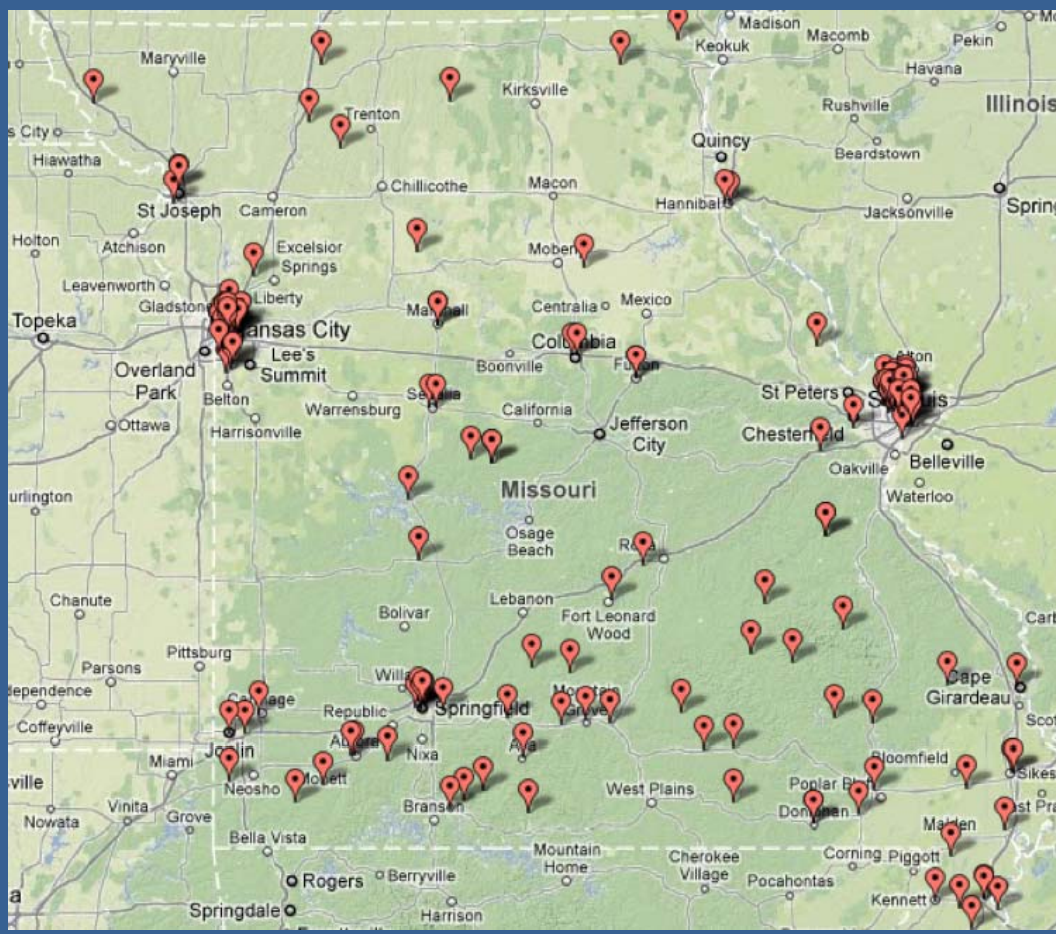
## Minority

(Top 25% of schools ranked by minority pop.)



## Poverty

(Top 25% of schools ranked by FRL%)



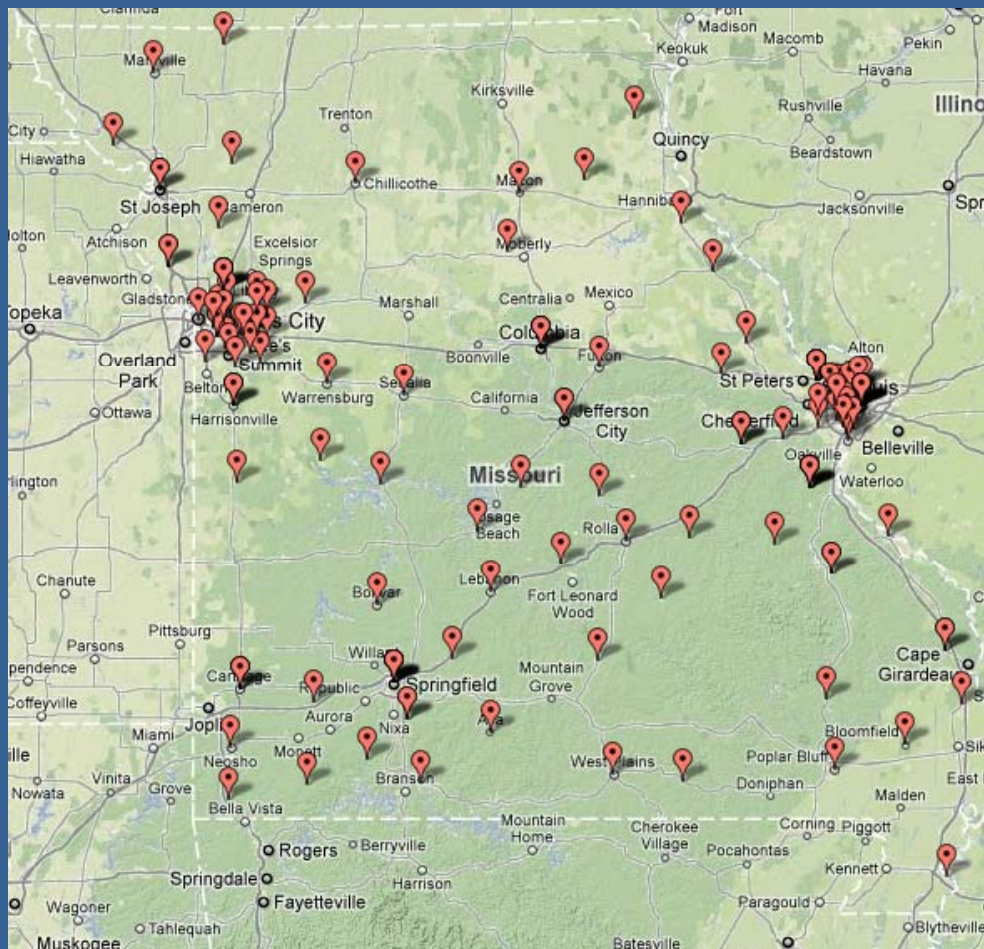




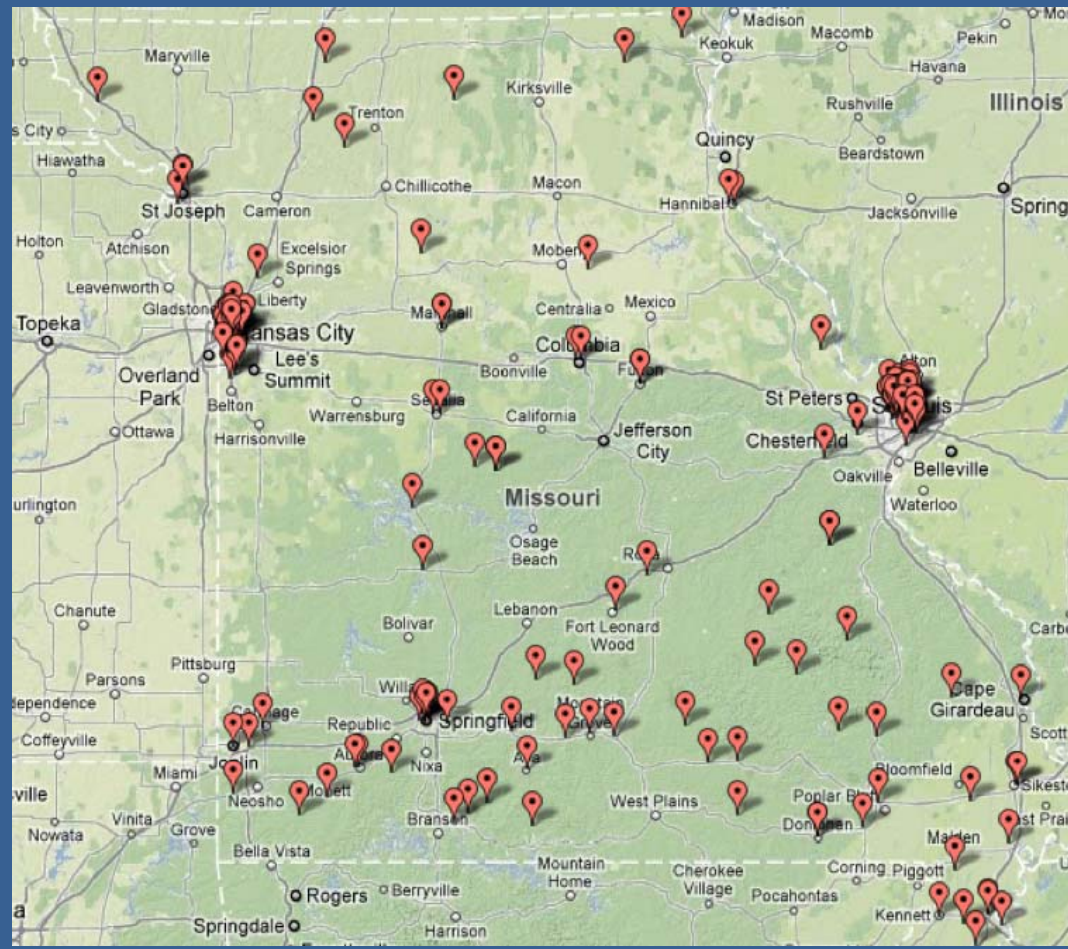
MISSOURI BICYCLE AND  
PEDESTRIAN FEDERATION

# Population Distribution

## Award Distribution (if by population)

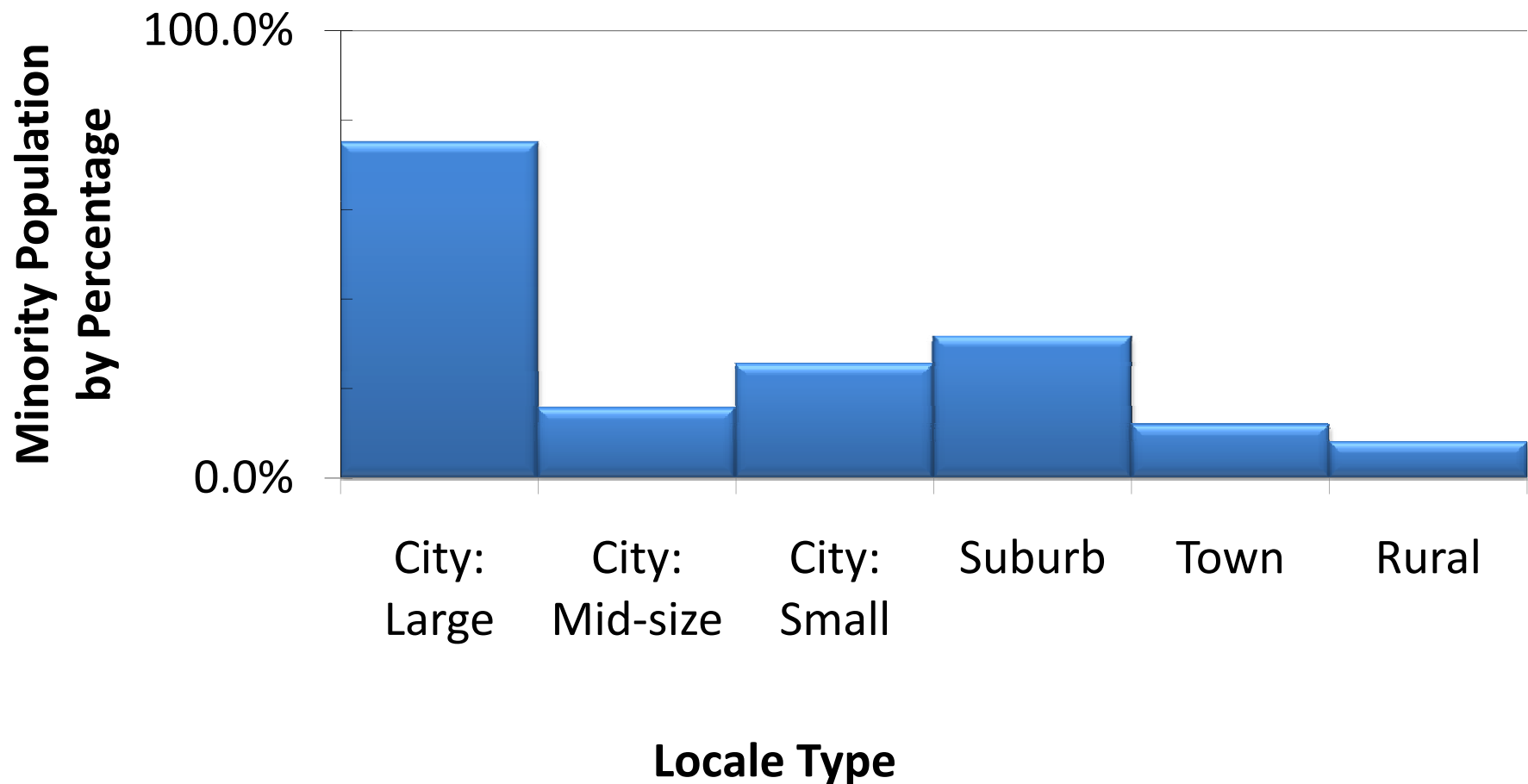


## Poverty Distribution (Top 25% of schools ranked by FRL%)



# Population Distribution

## Missouri Student Minority Population by Urban Classification



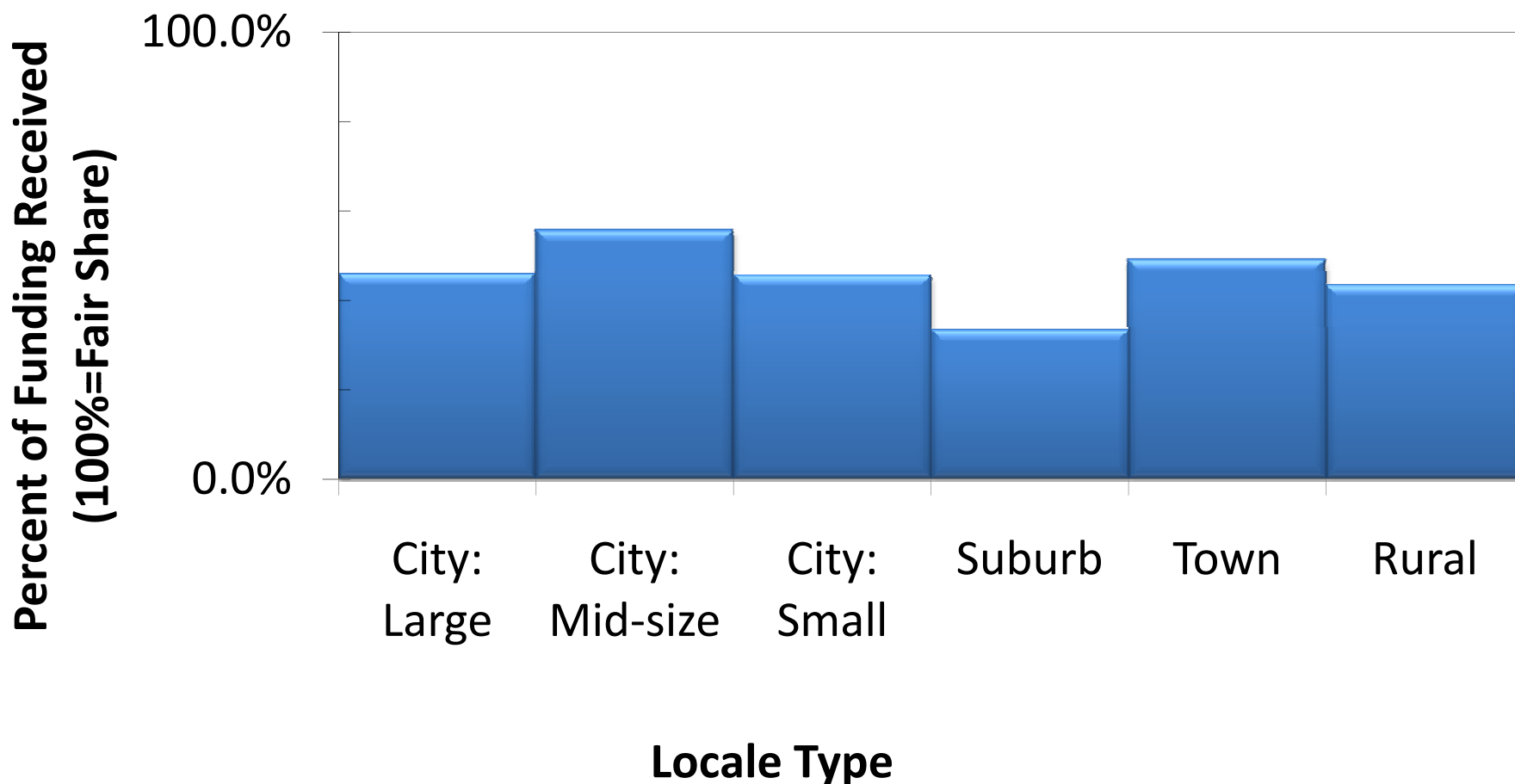




MISSOURI BICYCLE AND  
PEDESTRIAN FEDERATION

# Population Distribution

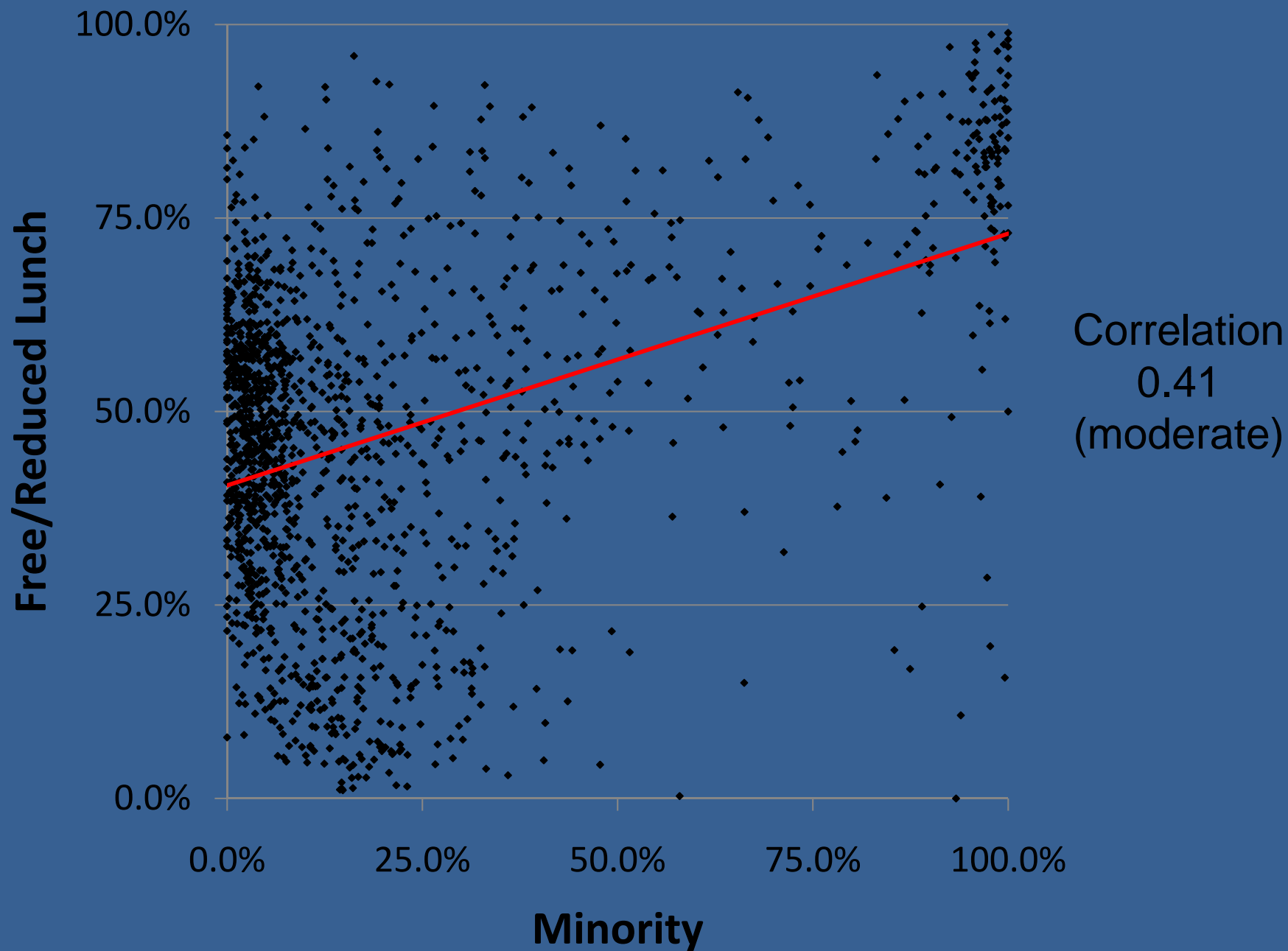
## Missouri Free and Reduced Lunch by Urban Classification





MISSOURI BICYCLE AND  
PEDESTRIAN FEDERATION

# Underserved: Poverty vs. Minority

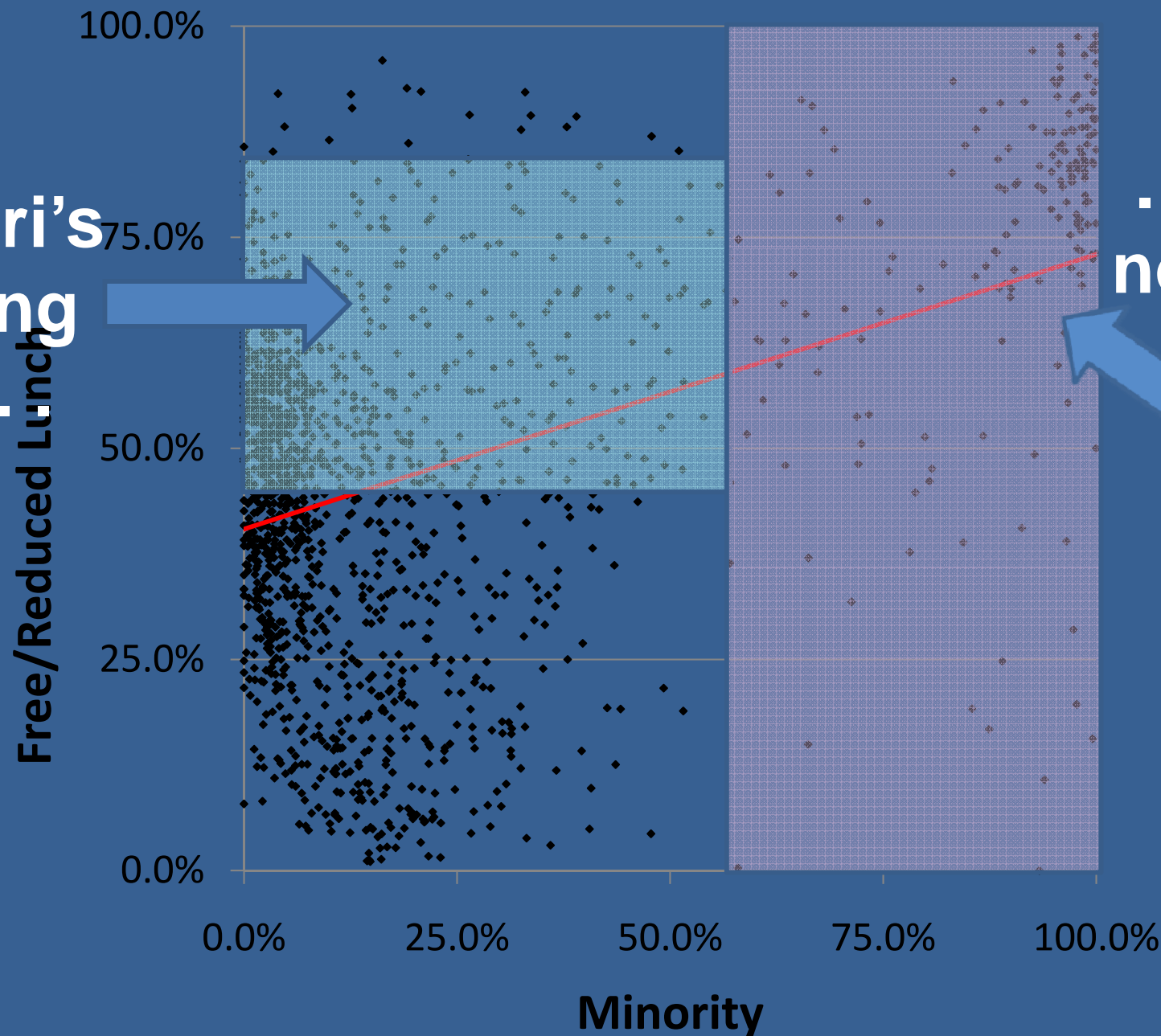




MISSOURI BICYCLE AND  
PEDESTRIAN FEDERATION

# Underserved: Poverty vs. Minority

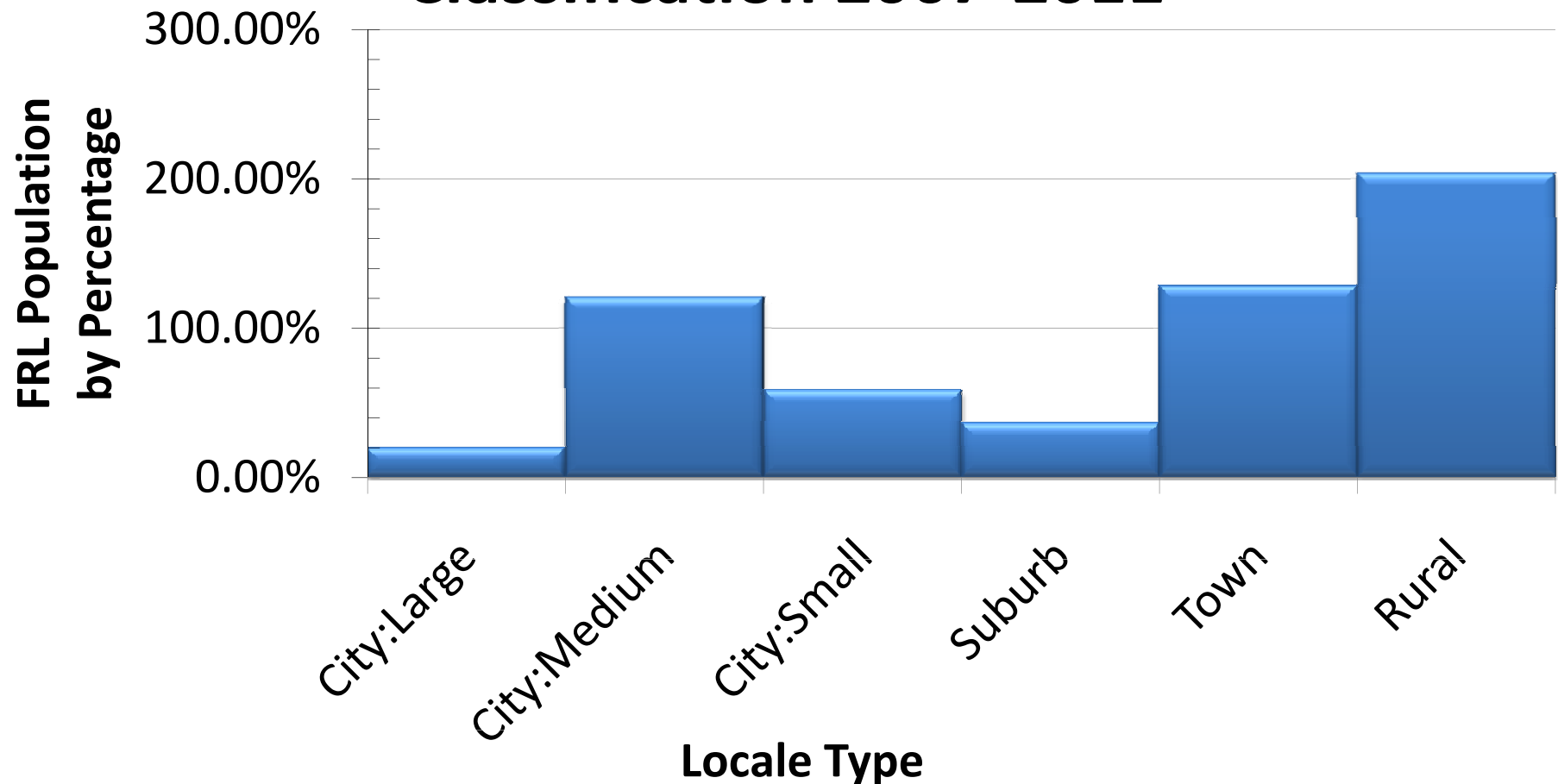
Missouri's  
reaching  
this . . .



... but  
not this

# Underserved Communities: Results

## Missouri SRTS Funding by Urban Classification 2007-2011

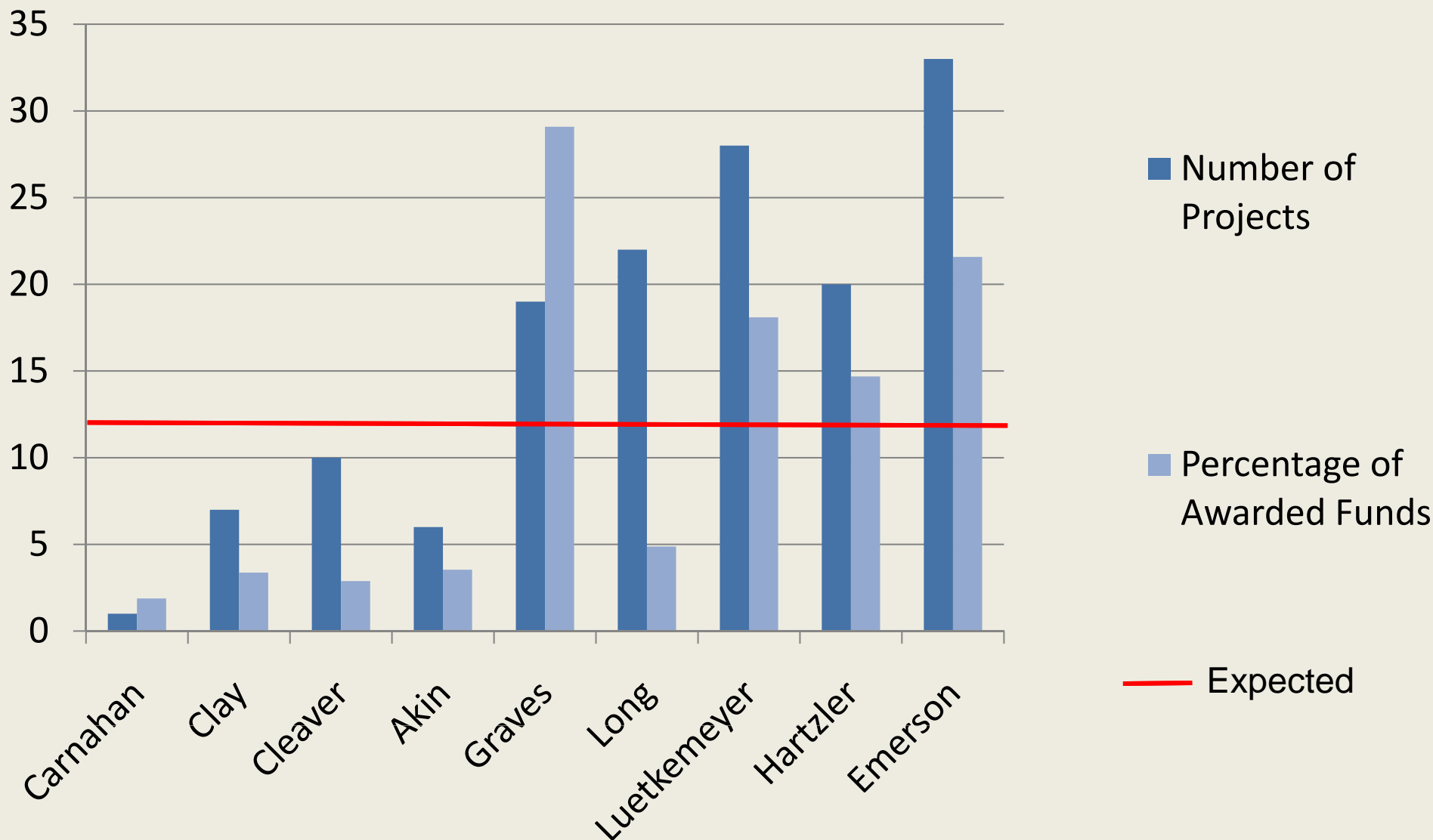




MISSOURI BICYCLE AND  
PEDESTRIAN FEDERATION

# Underserved Communities: Results

## SRTS Funding by Congressional District

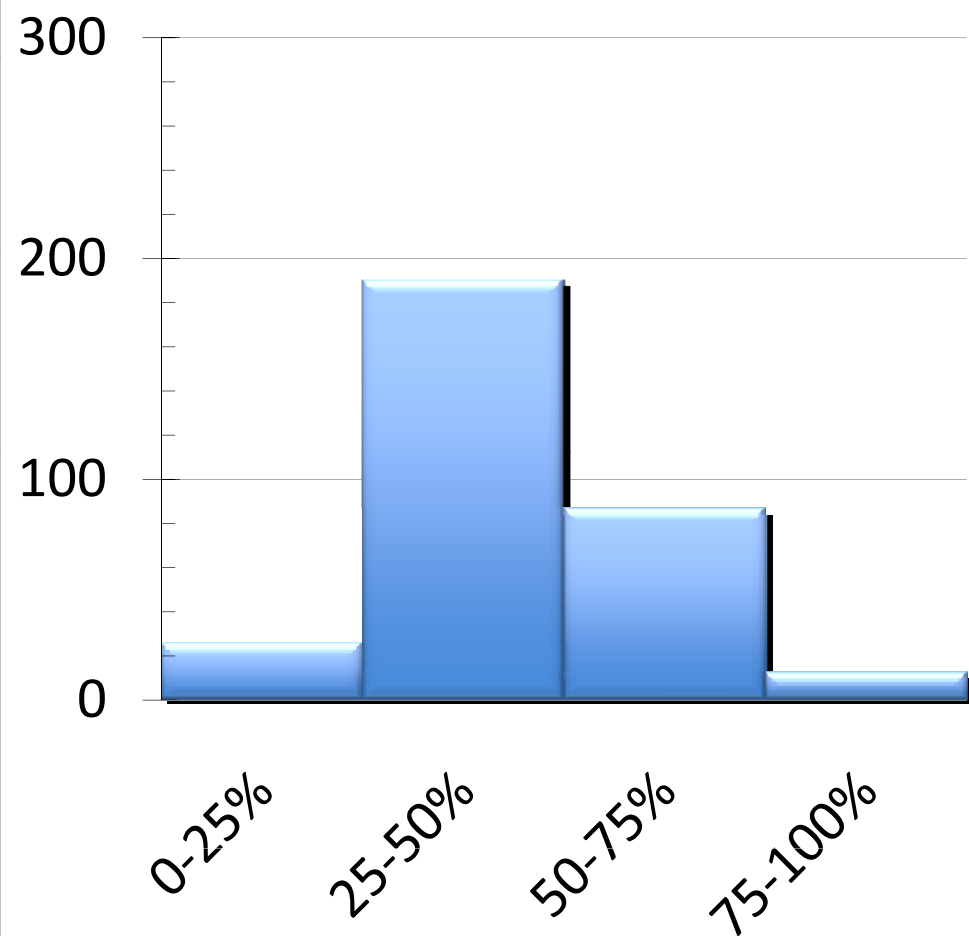




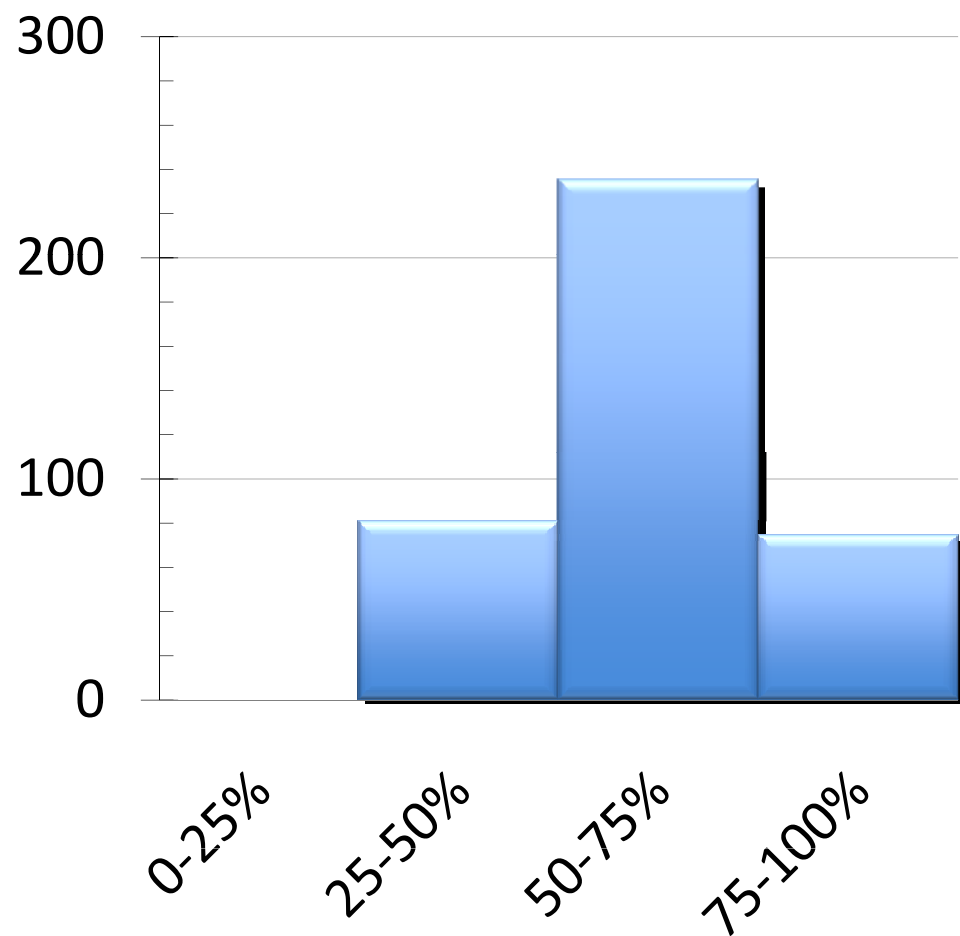
MISSOURI BICYCLE AND  
PEDESTRIAN FEDERATION

# Underserved Communities: Results

## Low Income 2007-2010



## Low Income 2011

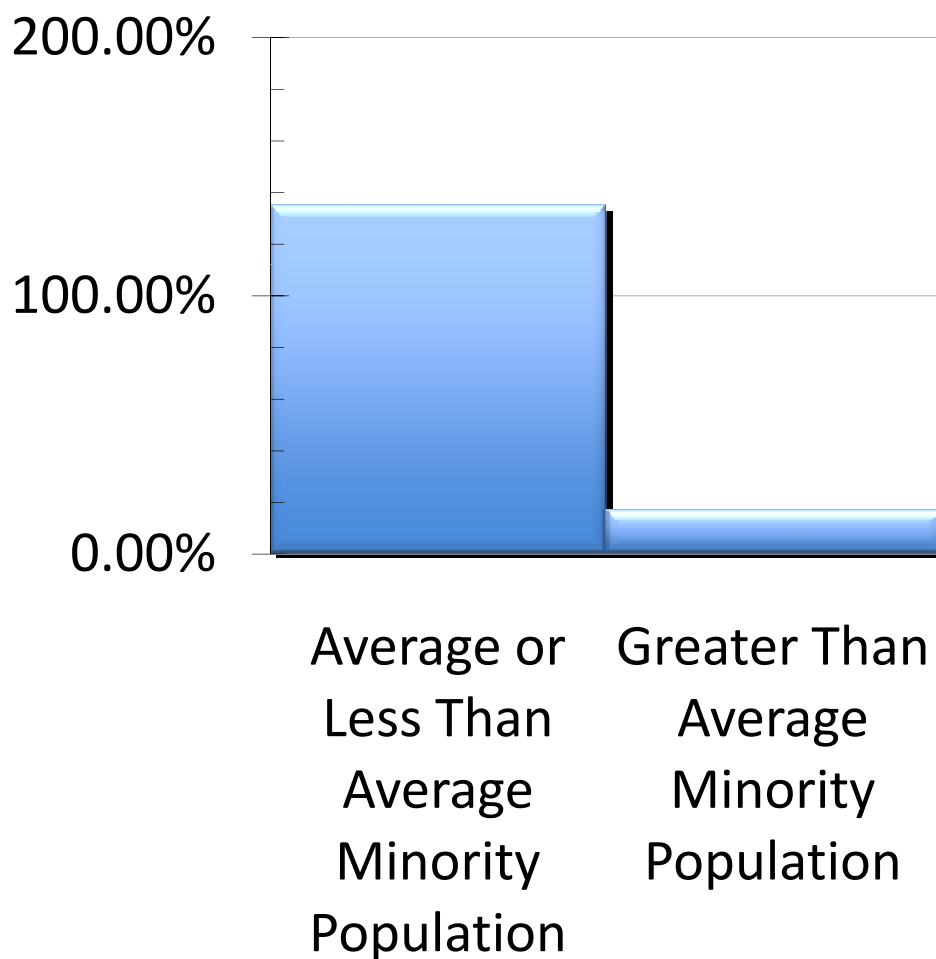




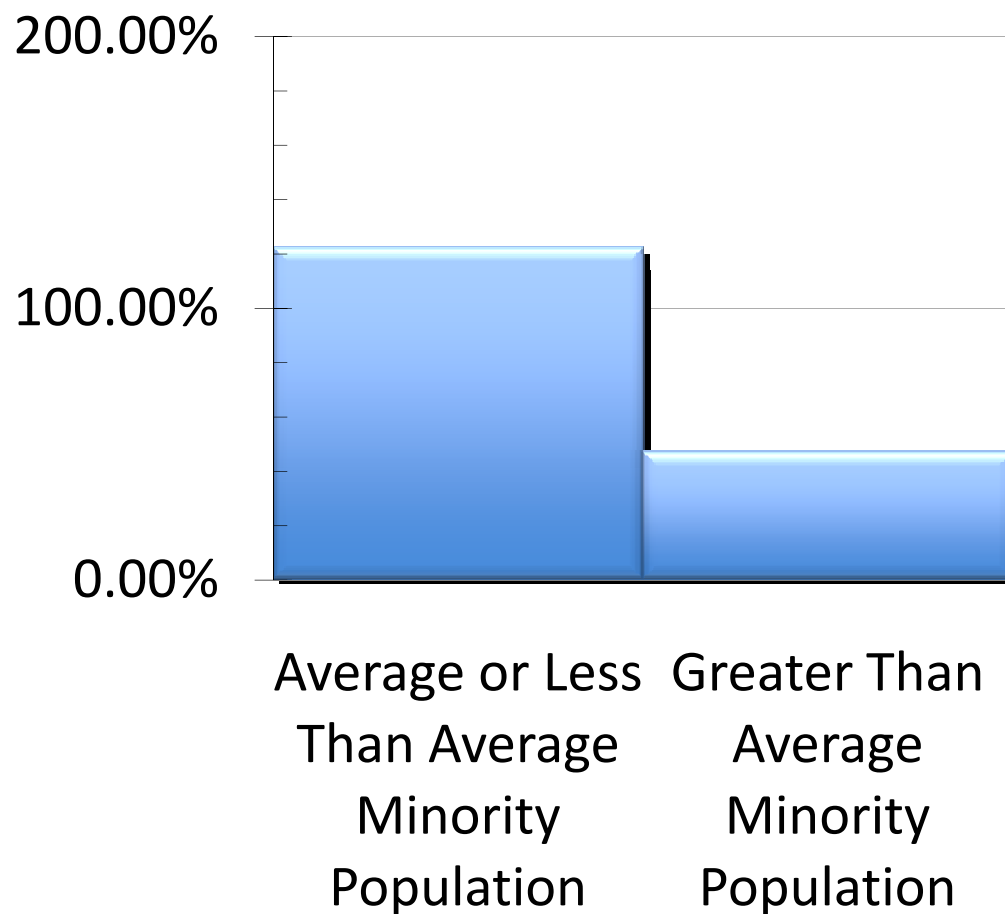
MISSOURI BICYCLE AND  
PEDESTRIAN FEDERATION

# Underserved Communities: Results

## Minority Pop. 2007-2010



## Minority Pop. 2011

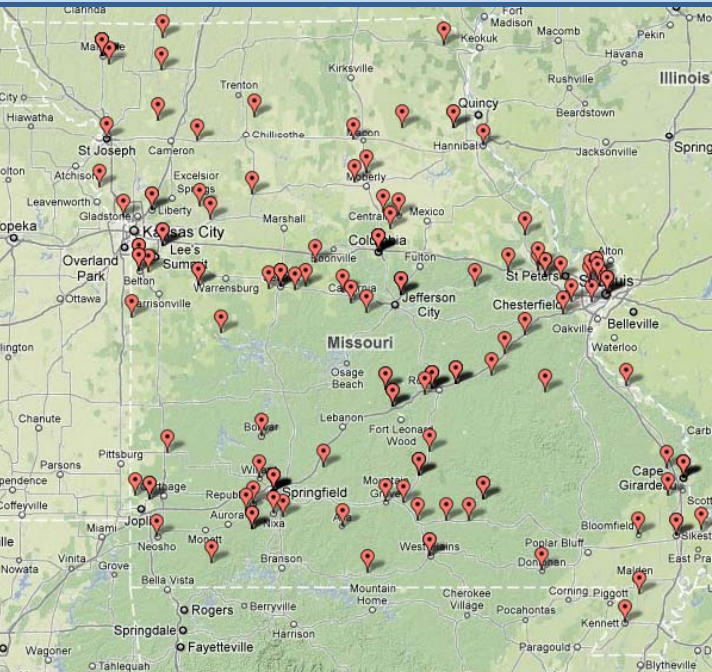




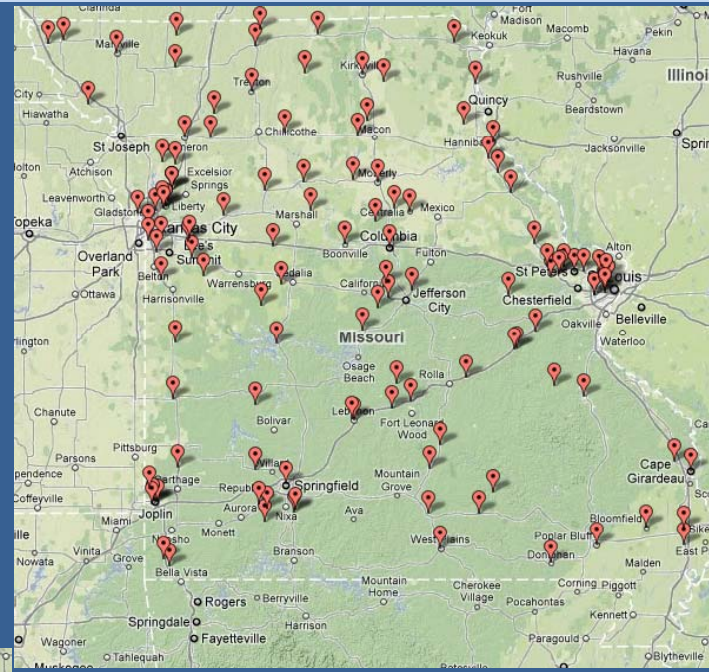


MISSOURI BICYCLE AND  
PEDESTRIAN FEDERATION

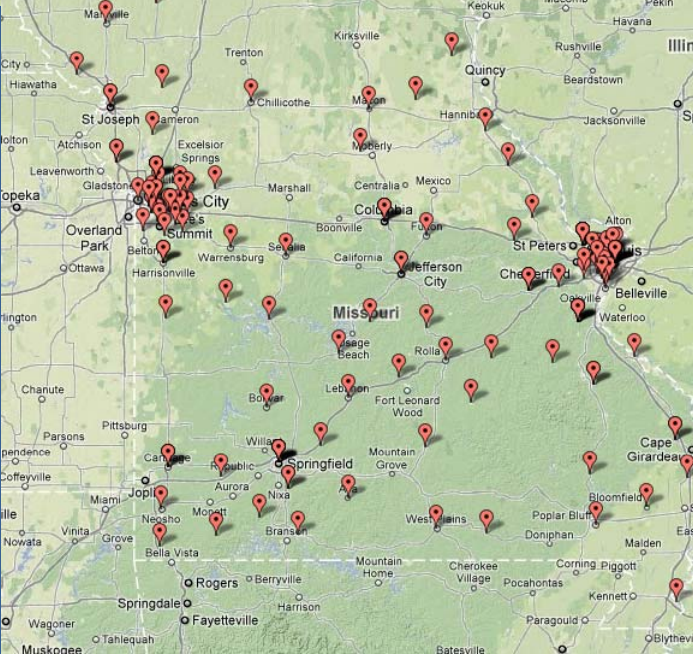
# Underserved Communities: Results



Ideal Distribution  
(population)



Awards  
2007-2011



Applications 2011



SAFE ROUTES  
to School  
NATIONAL PARTNERSHIP

Missouri  
Network





MISSOURI BICYCLE AND  
PEDESTRIAN FEDERATION

# Underserved Communities: Results

## Conclusions

- Prior to 2011, Missouri SRTS funding wasn't reaching poor or minority schools
- Significant improvement in 2011
  - Our simple interventions worked
- More success reaching poor schools than minority schools
- Few funds going to urban populations
- Lack of applications from underserved areas is part of the problem (but not all)



# Underserved: What can we do

## Our simple interventions worked—so do more of the same:

- Need people from these communities on the Network & SRTS Advisory Committee
- Provide SRTS grant application workshops & assistance to underserved areas
- Outreach/application training via teleconference
- Mentor – pick a school, any school
- We can use the E' to encourage that they apply
- Educate community leaders and elected officials about the SRTS program and about the disparity
- Show success stories from other states
- Encourage districts to hire someone for SRTS urban outreach
- MoDOT should spend a small % of SRTS funds supporting this type of work in underserved areas

# Underserved: What can we do

- Recommendations to the DOT:
  - Analyze data on poor & minority schools, share with SRTS scoring committee, FHWA
  - Consider implementing funding quotas, ie:
    - 15% of funds for schools with 75% or greater free/reduced lunch
    - 40% of funds for schools with greater than average minority population
  - Application limits do limit SRTS in large cities
  - Analyze by *population* not *geography*



# Underserved: What can we do?

## What did California do?

**Create or adapt and publicize resources** and website content addressing the needs low-income communities and schools to improve participation in the SR2S and SRTS programs

**Conduct a outreach campaign** to ensure that low-income communities are aware of Safe Routes to School opportunities and available technical assistance

**Provide technical assistance** to currently-funded projects on the federal aid process to increase the number of low-income communities that are able to successfully complete projects and be competitive for future funding

**Conduct a needs assessment** in low-income communities to identify barriers to applying for and successfully completing SR2S and SRTS projects and utilizes this information to provide targeted technical assistance to low-income schools and communities

**Conduct a survey** to determine what strategies are being employed at the local and District levels to increase participation of low-income communities.





MISSOURI BICYCLE AND  
PEDESTRIAN FEDERATION

# *Missouri Safe Routes to School Network Funders*

Safe Routes to School National Partnership

The Missouri Foundation for Health  
The Incarnate Word Foundation, St. Louis

U.S. Department of Health and Human Services' Region VII  
Office of Minority Health.

Blue Cross-Blue Shield of Kansas City

Daughters of Charity Foundation of St. Louis

Lutheran Foundation of St. Louis





MISSOURI BICYCLE AND  
PEDESTRIAN FEDERATION

*Special thanks to the members  
of the Missouri SRTS Network's  
Underserved Communities  
Action Team, for helping to  
prepare, analyze, and act on  
this data*

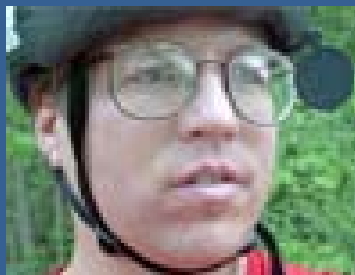




MISSOURI BICYCLE AND  
PEDESTRIAN FEDERATION

**Brent Hugh**  
**Eric Bunch**  
**Sarah Shipley**

Missouri Network Organizers  
Missouri Bicycle & Pedestrian  
Federation



[MoBikeFed.org/UnderservedCommunities](https://MoBikeFed.org/UnderservedCommunities)  
[saferoutespartnership.org/missouri](https://saferoutespartnership.org/missouri)  
[missouri@saferoutespartnership.org](mailto:missouri@saferoutespartnership.org)  
816-695-6736

