

community

vibrant  
development



# Livable streets Lee's Summit

September 2015 MML Conference

LS

LEE'S SUMMIT  
MISSOURI

LS

*Yours Truly*

# Livable streets Lee's Summit

## Livable Streets = Complete Streets

A Livable Street...

has been designed and operates with considerations for safe access and movement along and across the street accommodating citizens of all ages and abilities, including motorists, bicyclists, pedestrians, and transit riders.

A Livable Street is not “typical” or “one size fits all” ...

# Livable streets Lee's Summit

**Our streets are for *anyone* to use...**

- Motorists
- Pedestrians
- Bicyclists
- Transit Riders
- People of all ages, abilities & disabilities

***...We should build them that way!***

# Livable streets Lee's Summit

## Benefits:

- People who walk or bike
- People who drive or ride transit
- Economically challenged
- People with special needs (ADA)
- Older citizens
- Children/Families
- Business owners/merchants
- Cities/Towns

**Everyone!**



# Livable streets Lee's Summit

## Other Benefits:

- Connectivity
- Property values
- Economy
- Public Health
- Public Safety
- Environment
- Recreation
- Sustainability
- Community Image
- Quality of Life

# Livable streets Lee's Summit

## Livable Street Elements:

- Sidewalks
- Multi-Use Paths
- Paved shoulders
- Bike lanes & Wide curb lanes
- Connectivity (Streets, Trails, Sidewalks)
- Mixed Use Development & Varied Architecture/Façade
- Raised Medians & Refuge Areas (e.g. Green Space/Buffer)
- Access Management
- Crosswalks & Pedestrian Signals
- Roundabouts
- Traffic Calming (Speed Humps, Traffic Circles)
- Intersection Corner “Bump-Outs”



# Livable streets Lee's Summit

## Livable Streets Elements (cont'd):

- Bus Services and Bus stops (Transit)
- Parks
- Street Furniture (Benches, Rest Stops, Etc.)
- Bike Racks
- Street Lighting
- Accessibility Improvements (ADA)
- Safe Routes to School
- "Road Diet"
- Landscaping (e.g. Street Trees)
- Beautification



*(not an all-inclusive list, just some representative elements)*

# Livablestreets Lee's Summit

## Policy Result:

A planned and built NETWORK of safe and efficient transportation accommodations for pedestrians, cyclists, transit users, and motorists that include people of all abilities...it is NOT every element on every street.



# Livablestreets Lee's Summit

How do we build citizen support?

How are we funding this?

How is this received by the public?

What are some of the obstacles?

What value does it bring to the community?

# Livable streets Lee's Summit

So how is Lee's Summit implementing Livable Streets?

– Planning (Infrastructure, Land Use and Standards)

**Public Sidewalk Inventory Analysis Report**

prepared for

**Lee's Summit Missouri**

**City of Lee's Summit, MO**

**BICYCLE TRANSPORTATION PLAN**

May 2012

*The Plan*

**The System**

The Greenway Master Plan sets forth a long-term framework to guide future planning, design, and implementation of a city-wide system of multi-use trails and on-street bicycle routes, providing safe and convenient access for pedestrians and bicyclists to various destinations throughout the city. In addition, the master plan provides for links to Kansas City to the west, Independence to the north, Blue Springs to the east, and the Katy Trail to the south, all of which are a part of the Mid-America Regional Council system known as MetroGreen. See map and description of the Regional Map on the following page.

**The System**

Adhering to the concepts of the original greenway plan developed in 1996, the Greenway Master Plan is built around a Greenway Loop that is approximately 40-miles in length. This loop follows the major streams and rivers and connects the City's and County's large major parks at the edge of the city, such as Longview Lake County Park, Fleming Park, and the Little Blue River. Within this loop, a system of Community Connectors along stream corridors, greenways, and roadways connect the loop to neighborhoods, schools, parks, and businesses. During the process it was determined that it was important not only to develop trails within the city limits, but also to make sure the Lee's Summit Greenway

With its location, Lee's Summit is a very important link between the Kansas City Metropolitan Area and the statewide rails-to-trail system, the Katy Trail. These connectors are known as Regional Connectors.

**The Katy Trail**

The Katy Trail is a 225-mile rail-to-trail bike path stretching across most of the state of Missouri. Over half of it follows Lewis and Clark's path up the Missouri River, where you can ride beneath towering river bluffs while eagles circle overhead. After leaving the river, the trail meanders through peaceful farmland and small-town Americana. Currently the Katy Trail ends at Clinton, Missouri. Pleasant Hill is currently planning extending it north of Pleasant Hill, while Kansas City is planning a connection south out of the city near I-435 and I-470. The Lee's Summit Greenway System completes the connection.

**Current System**

To date, 22 miles of greenway have been built throughout the city. This includes 19 miles of on-street bike routes (Lakewood & Longview Lakes), and 12 miles of multi-use trails (along streams and roadways). In addition to these major greenway connections, 9.5 miles of interior park trails have

**Greenway System Components**

Trail Types

It is intended all trail types follow general trail standards for slope, layout, and safety requirements as provided by the American Association of State Highway and Transportation Officials (AASHTO) Guide for the Development of Bicycle Facilities, Americans with Disabilities Act (ADA), and the Mid-America Regional Council's MetroGreen.

Several trail types are used throughout the Greenway Plan. The following is a brief description of each:

- █ **Horseshoe Trail** - This trail is a hard or soft-surfaced trail, usually 10-foot in width, following a natural green corridor, utility easement, or is located within a park. These trails are open to all user types except horseback riding and motorized vehicles.
- █ **Streamway Trail** - This trail is located along a stream corridor or drainage-way and is a 10-foot wide hard-surfaced trail due to its potential for flooding. These trails are open to all user types except horseback riding and motorized vehicles.

**Lee's Summit, Missouri Thoroughfare**

April 2006

City of Lee's Summit, Missouri

**Lee's Summit Transit Demand Assessment**

**Final Report**

September 2009

**LS**

**LEE'S SUMMIT MISSOURI**

**AMERICANS WITH DISABILITIES ACT (ADA) TRANSITION PLAN FOR PUBLIC RIGHTS-OF-WAY**

August 2014

**HNTB**

816.943.1000 | 220-38 Green Street, Lee's Summit, MO 64063 | city@ls.net



# Livable streets Lee's Summit

So how is Lee's Summit implementing Livable Streets?

- Review and change existing streets and proposed street designs
- Sidewalk and Trail/Path Infrastructure Construction

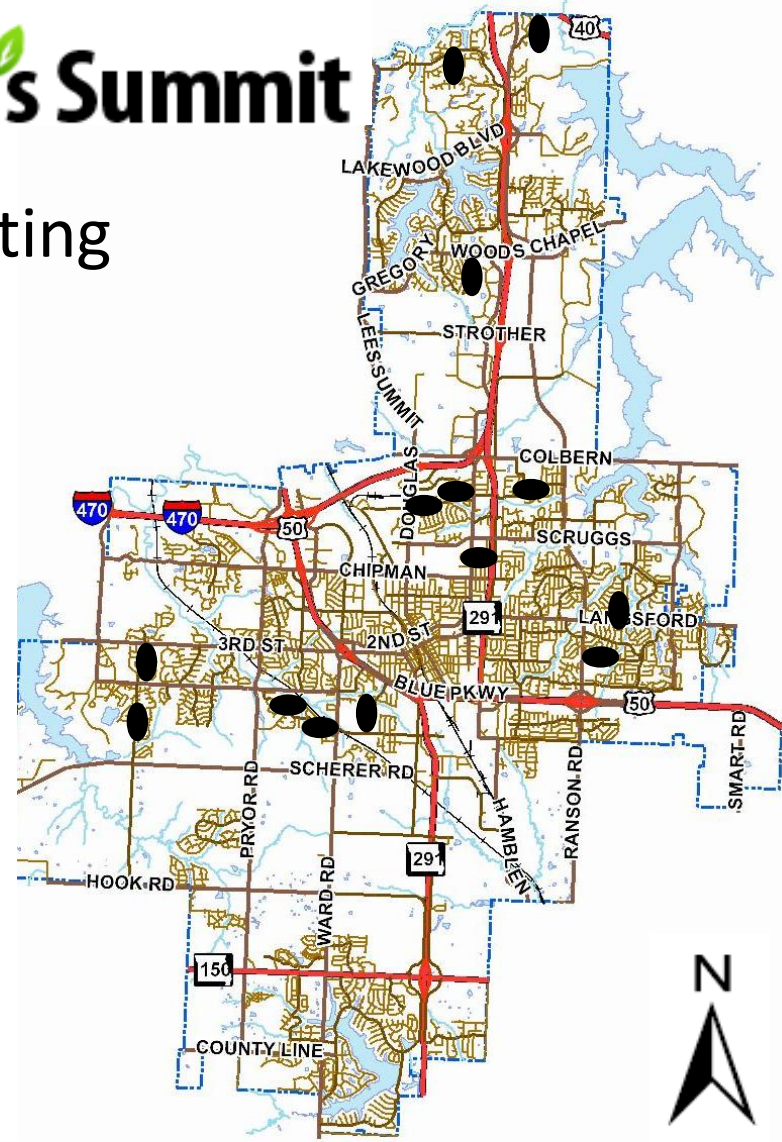


# Livable streets Lee's Summit

So how is Lee's Summit implementing Livable Streets?



Traffic Calming





# Livable streets Lee's Summit

So how is Lee's Summit implementing Livable Streets?

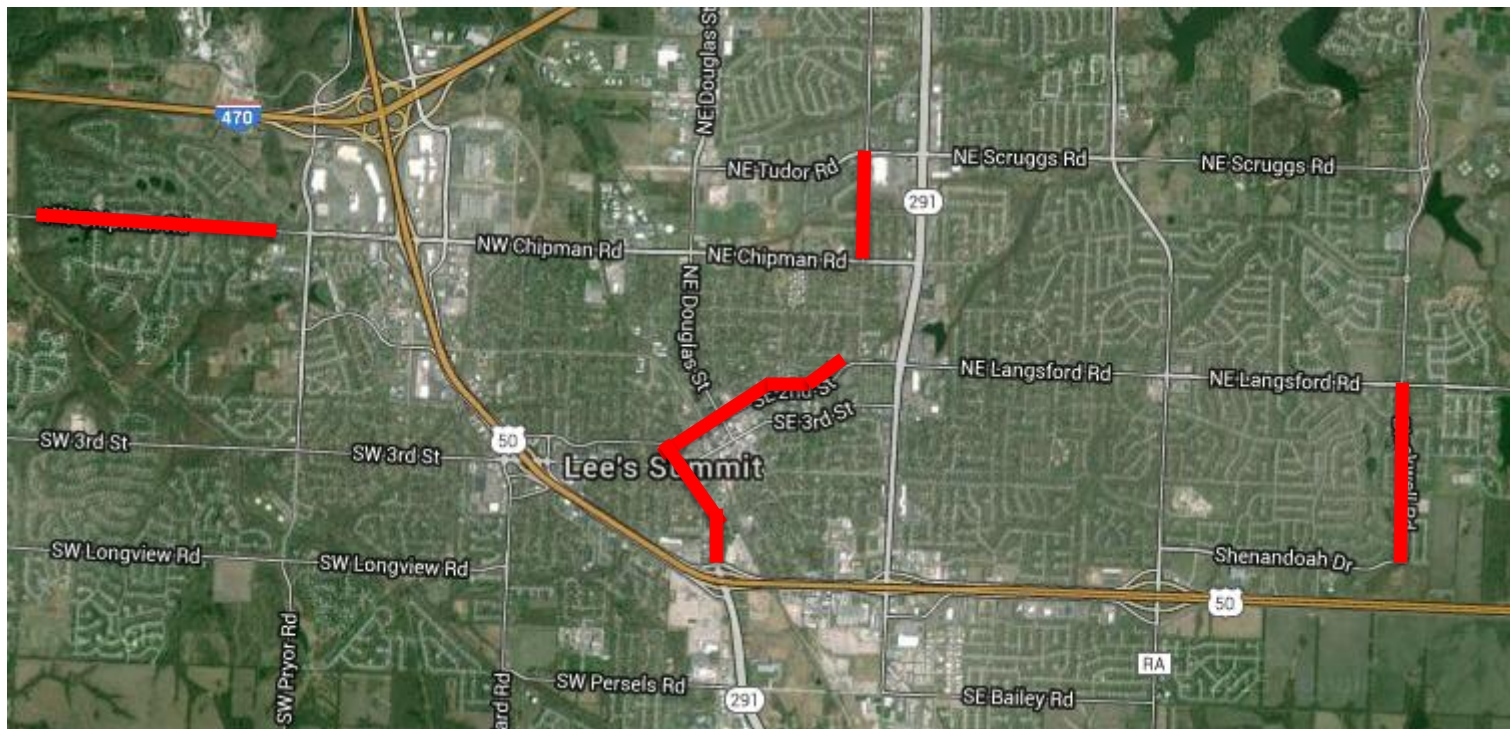
- Roundabouts



# Livable streets Lee's Summit

So how is Lee's Summit implementing Livable Streets?

- Road Diets





# “Road Diets” 2<sup>nd</sup> Street





# “Road Diets”



# Independence Ave





# Livable streets Lee's Summit

So how is Lee's Summit implementing Livable Streets?

- Paved Shoulders





Turf Shoulders



Paved Shoulders

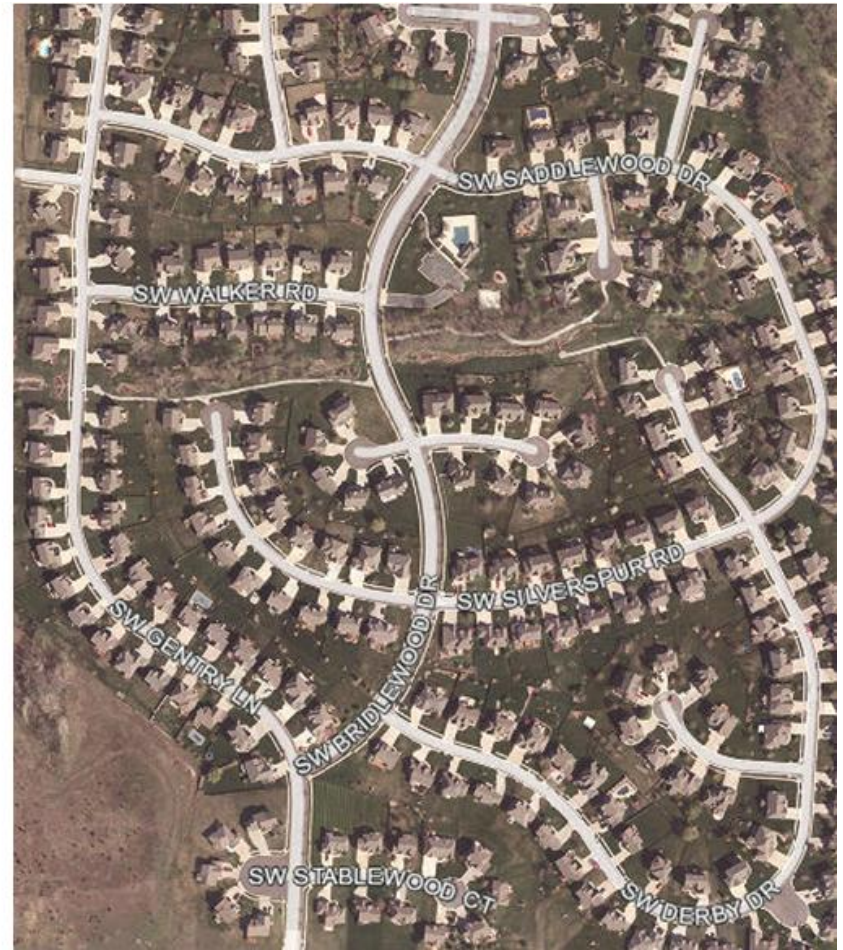
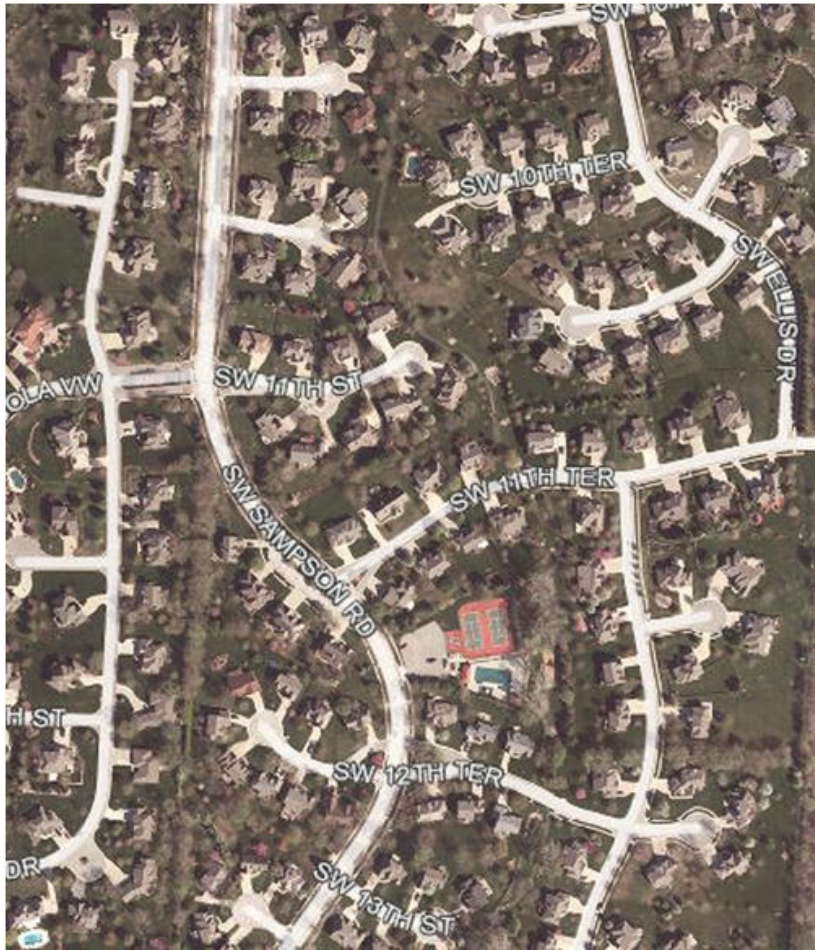
# Livablestreets Lee's Summit

So how is Lee's Summit implementing Livable Streets?

- Building and Promoting the Street Grid/Connectivity  
(Changing and Promoting Better Development)
- New and Improved Road Connections
- More Connected Subdivisions

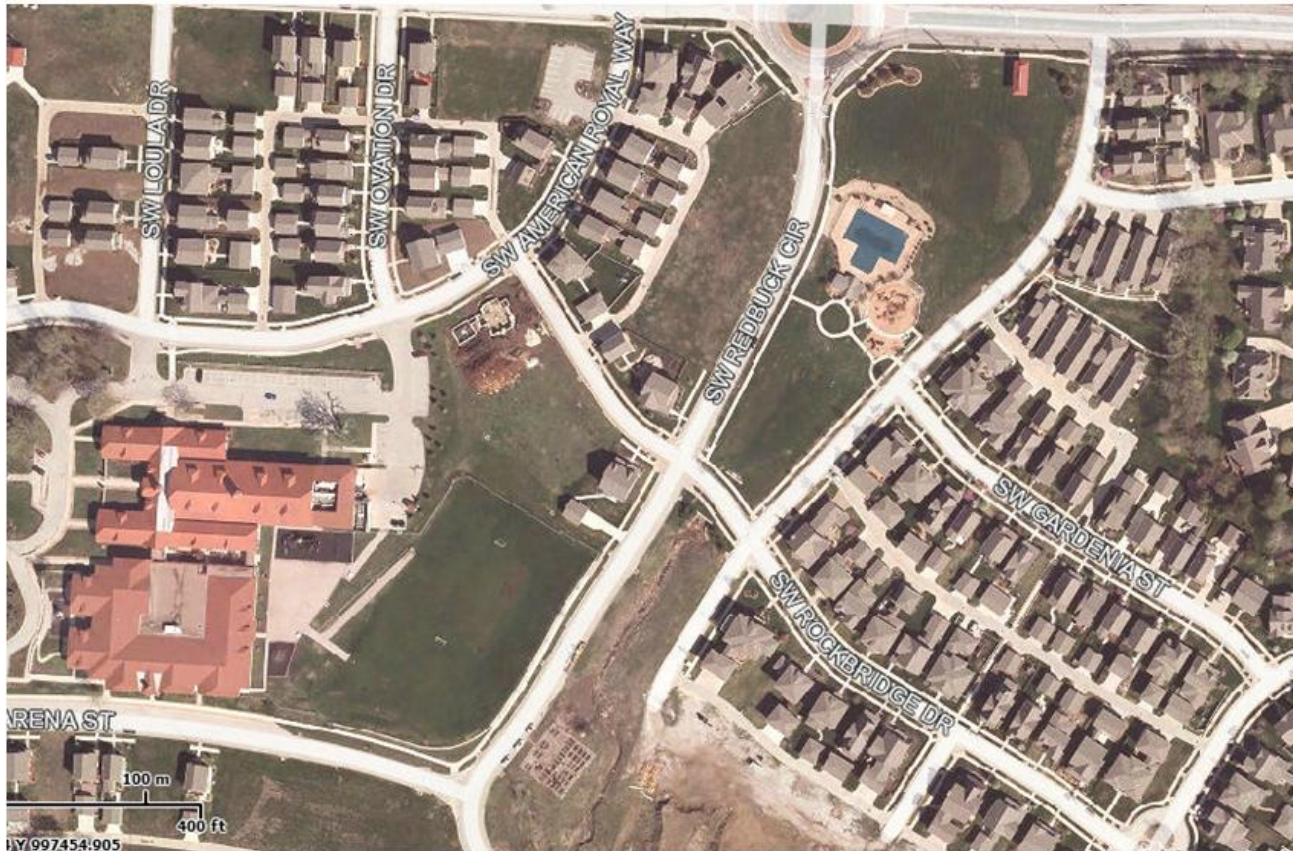


# Livable streets Lee's Summit





# Livable streets Lee's Summit



# Livablestreets Lee's Summit

So how is Lee's Summit implementing Livable Streets?

- Street Lighting (Neighborhoods and Major Roadways)
- Landscaping (Douglas, Tudor, Ward)
- Safety Studies & Planning Studies (Safe Routes to School, Crash Mitigation Plans, Road Safety Audit Program)
- Enforcement (Police & Laws) & Education Activities
- Performance Monitoring & Measures

# Livable streets Lee's Summit

## A Livable Street Environment:

- “Place Making” for livable streets
- Attractive corridors generate activity





# Livable streets Lee's Summit

“Place Making”



Downtown Lee's Summit

# Livable streets Lee's Summit

“Place Making”



Lee's Summit

# Livable streets Lee's Summit

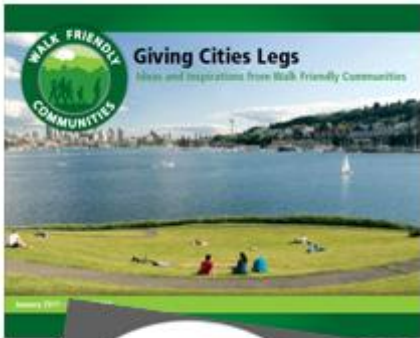
## Recognition/Awards

- ❖ Nationally Recognized Livable Streets Policy
- ❖ BFC Designation (Bronze 2012-2016)
- ❖ WFC Designation (Silver 2015-2020)





# Other Recognition!



National Complete Streets Coalition

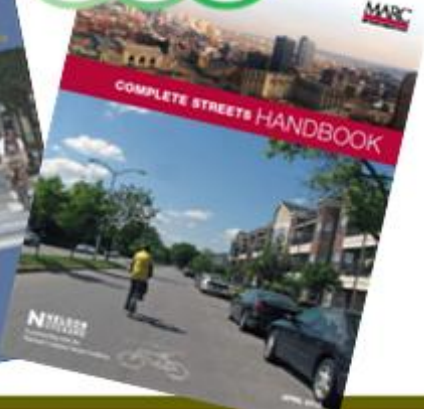
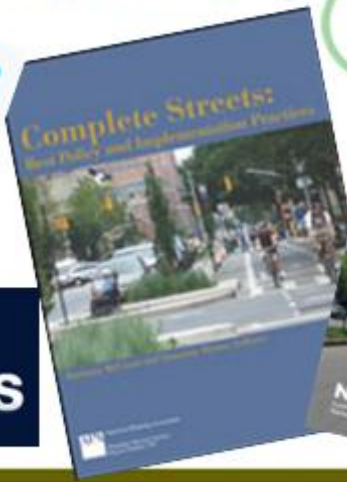


League of American Bicyclists



## MISSOURI BICYCLE AND PEDESTRIAN FEDERATION

ADVOCACY 101: HOW ADVOCATES IN LEE'S SUMMIT PASSED COMPLETE STREETS



- Resources

- Manuals & Guides
- Conferences & Workshops
- BFC
- WFC
- Professionals
- Community Advocates/Advisory Boards
- Partnerships and Collaborators (e.g. Schools)

# Livablestreets Lee's Summit

## Online Resources:

### ❖ Facebook:

Livable Streets Lee's Summit  
Missouri Livable Streets

### ❖ Websites:

[www.livablestreetsls.com](http://www.livablestreetsls.com)

<http://livablestreets.missouri.edu/>

[www.completestreets.org](http://www.completestreets.org)

[www.mobikefed.org](http://www.mobikefed.org)

[www.marc.org/bikeped/](http://www.marc.org/bikeped/)

[livablestreets.missouri.edu/](http://livablestreets.missouri.edu/)

[www.marc.org/transportation/completestreets.htm](http://www.marc.org/transportation/completestreets.htm)

### ❖ Online Reference Materials:

Missouri Livable Streets Design Manual

Missouri Livable Streets Advocacy Manual

MARC Complete Streets Policy Guidebook

Complete Streets Best Practices (B. McCann)

[www.cityofls.net](http://www.cityofls.net)

[www.bikewalkkc.org](http://www.bikewalkkc.org)

[www.apha.org](http://www.apha.org)

[smartgrowthamerica.org/complete-streets](http://smartgrowthamerica.org/complete-streets)

[trailnet.org](http://trailnet.org)

[pednet.org](http://pednet.org)

# Livablestreets Lee's Summit

How do we build citizen support?

How are we funding this?

How is this received by the public?

What are some of the obstacles?

What value does it bring to the community?



- > Blogs
- > Contact Us
- > Become a Stakeholder
- > Search

## Livable Streets Initiative

Are you a friend of Livable Streets Lee's Summit on Facebook yet?  
[If not, then click here!](#)