

Destination

Warsaw



A – Osage Trail from Highway 65



The City has started the first section of the Osage Trail.



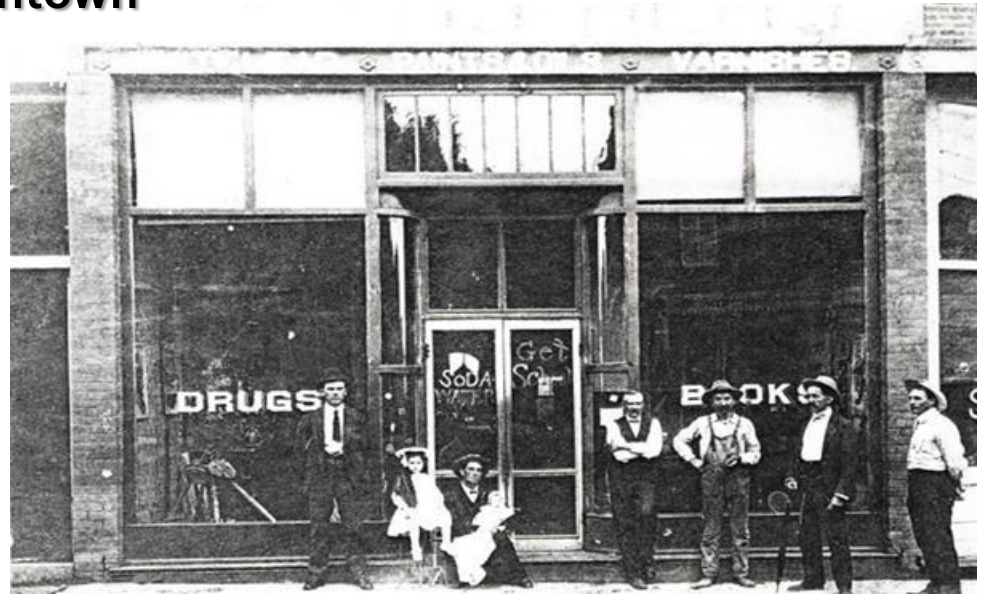
Material was obtained from the Highway 65 four lane project and placed to create a link through the waterway to the opposite shoreline. There was enough material to also create a parking area.

B – Downtown and Drake Harbor



Downtown

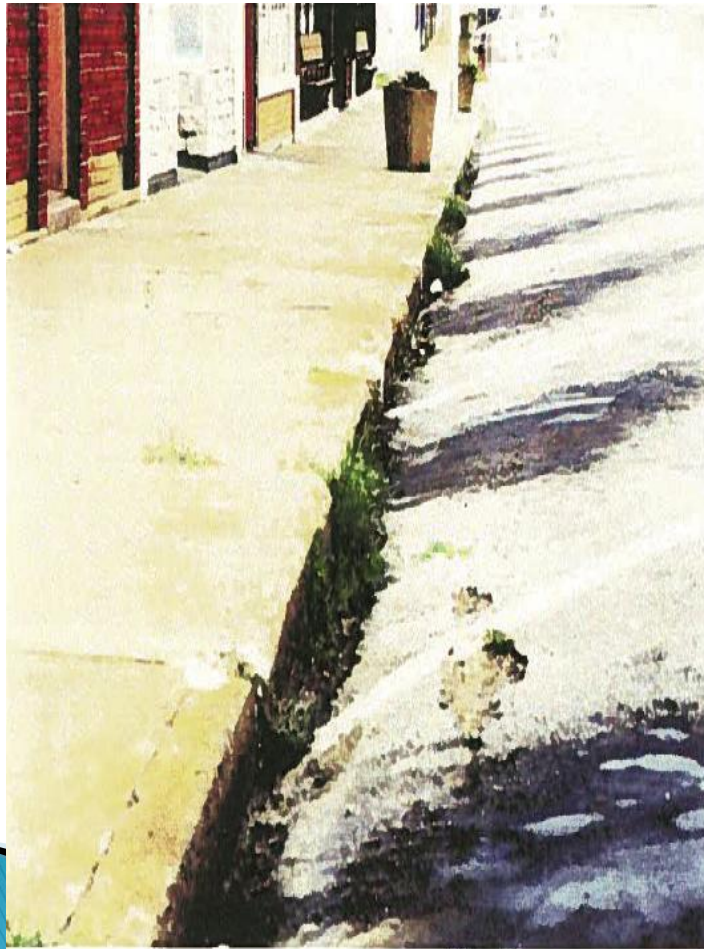
In 1997 a downtown/riverfront master plan was implemented with a phased approach for downtown revitalization. To encourage private interest and investment a Façade Revolving Loan was formed. Most of the facades in the downtown have been renovated to their original facade with most using the façade revolving loan.



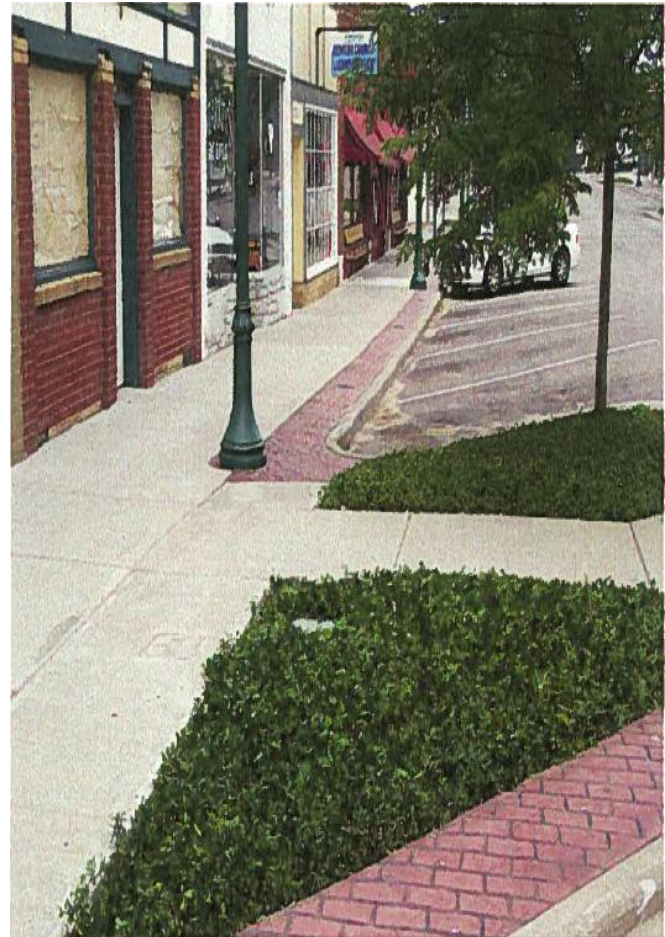
One of the façades won an award in the State of *Missouri's Excellence in Downtown Revitalizations*. All totaled, there have been over \$2,000,000 in private investments in the existing downtown buildings since 1997. Additionally, there has been over \$2.5 million dollars of new construction in the downtown area. However, much more was needed to be accomplished.

Infrastructure improvements were completed in 2002. The project consisted of new water mains, curbs, sidewalks and landscape. The project won the State of Missouri *2002 Excellence in Redevelopment Award for Public Improvements*.

Before



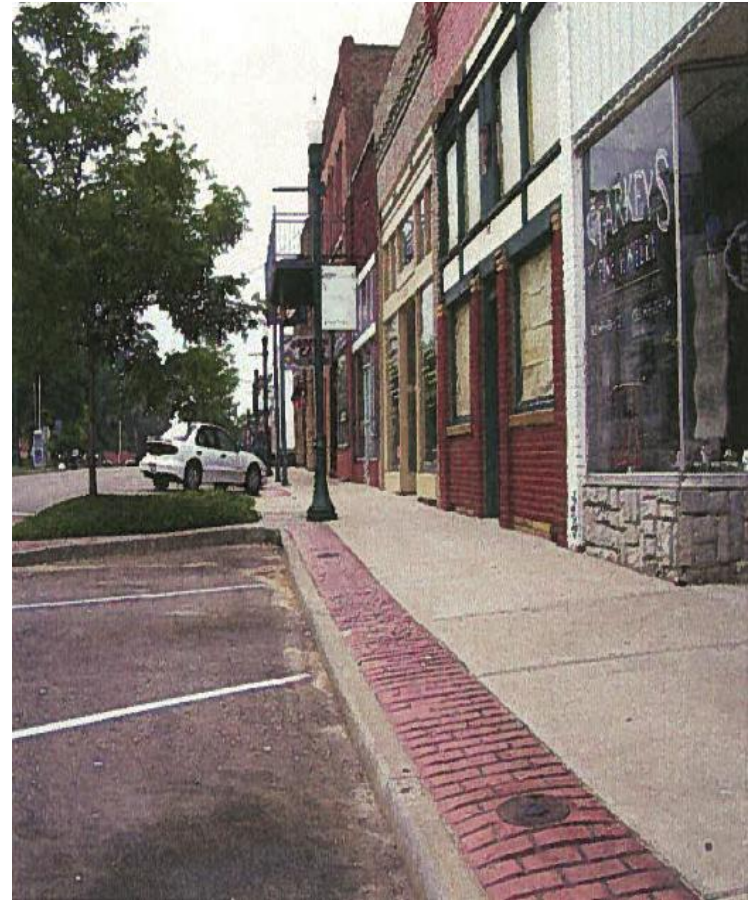
After



Before



After



Drake Harbor

Steam Boat Landing Boardwalk

Constructed in 2010 as part of ARRA



Steamboat Landing is part of a land and water trail system. This section of trail system, behind the Community Building, is 10 foot wide by approximately 1000 foot long boardwalk. It will have the capability to accommodate 64 boats of various sizes and other smaller watercraft on the Lake of the Ozarks. This will provide the opportunity for immediate access to the waterfront, downtown and the ever growing network of pedestrian and bicycle trails.



**Before
Construction**

**After
Construction**





**Before
Construction**

**After
Construction**





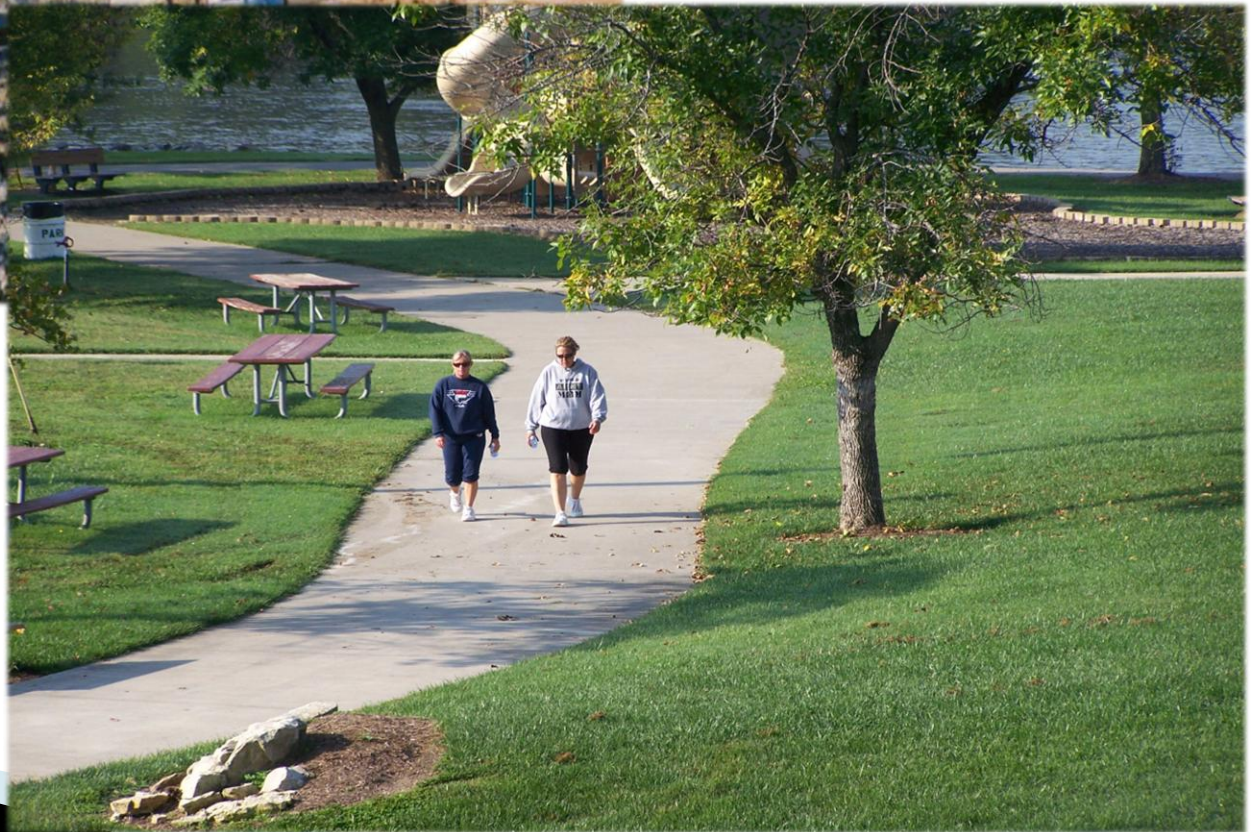


Drake Harbor
Recreation Area 1997

2013 with trails
completed and the
Osage Amphitheater













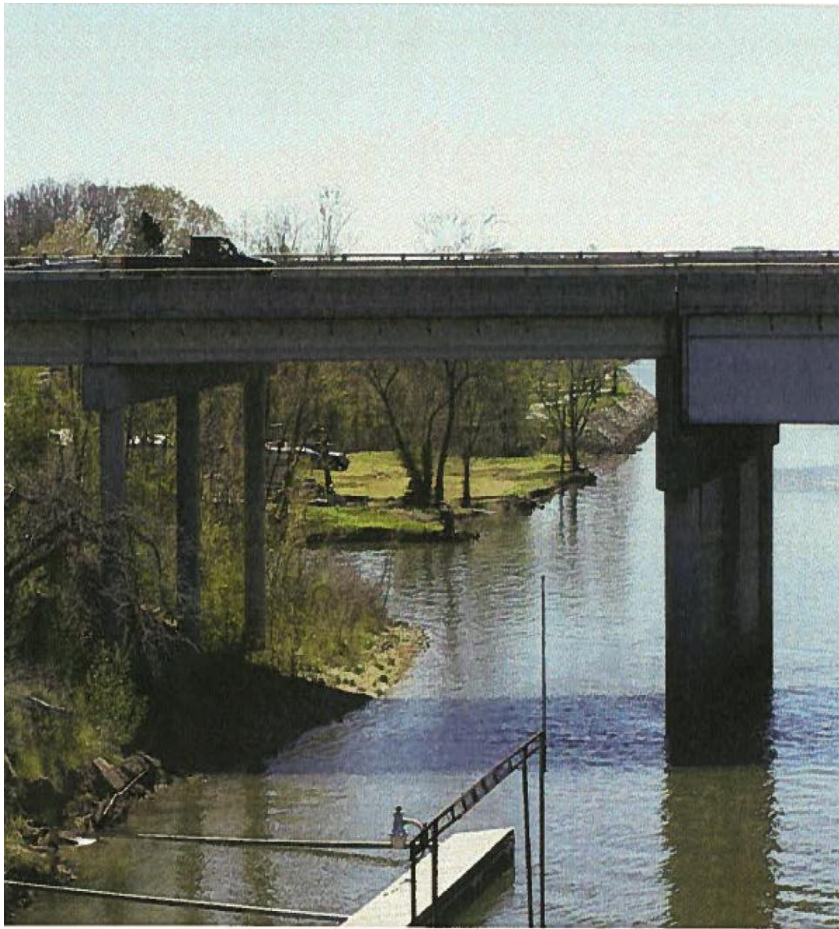


C – Joe Dice Swinging Bridge



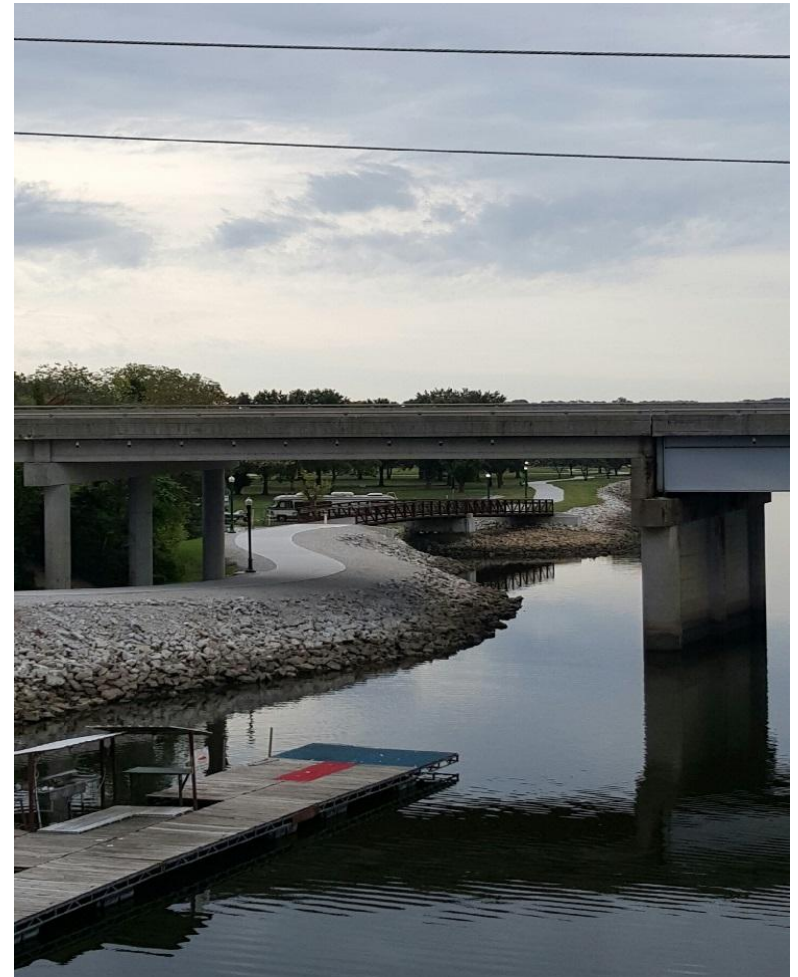






Before
Construction

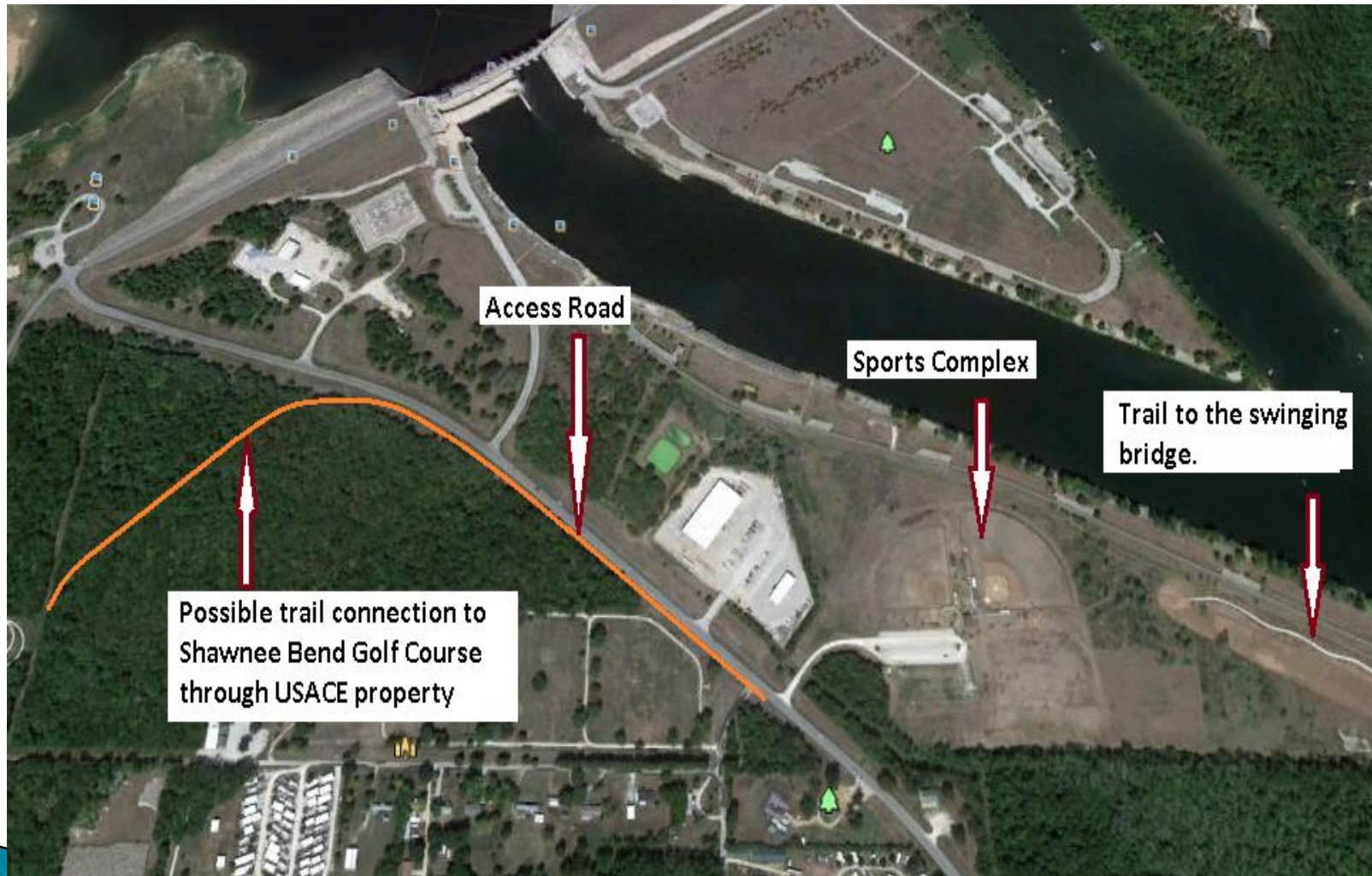
After
Construction

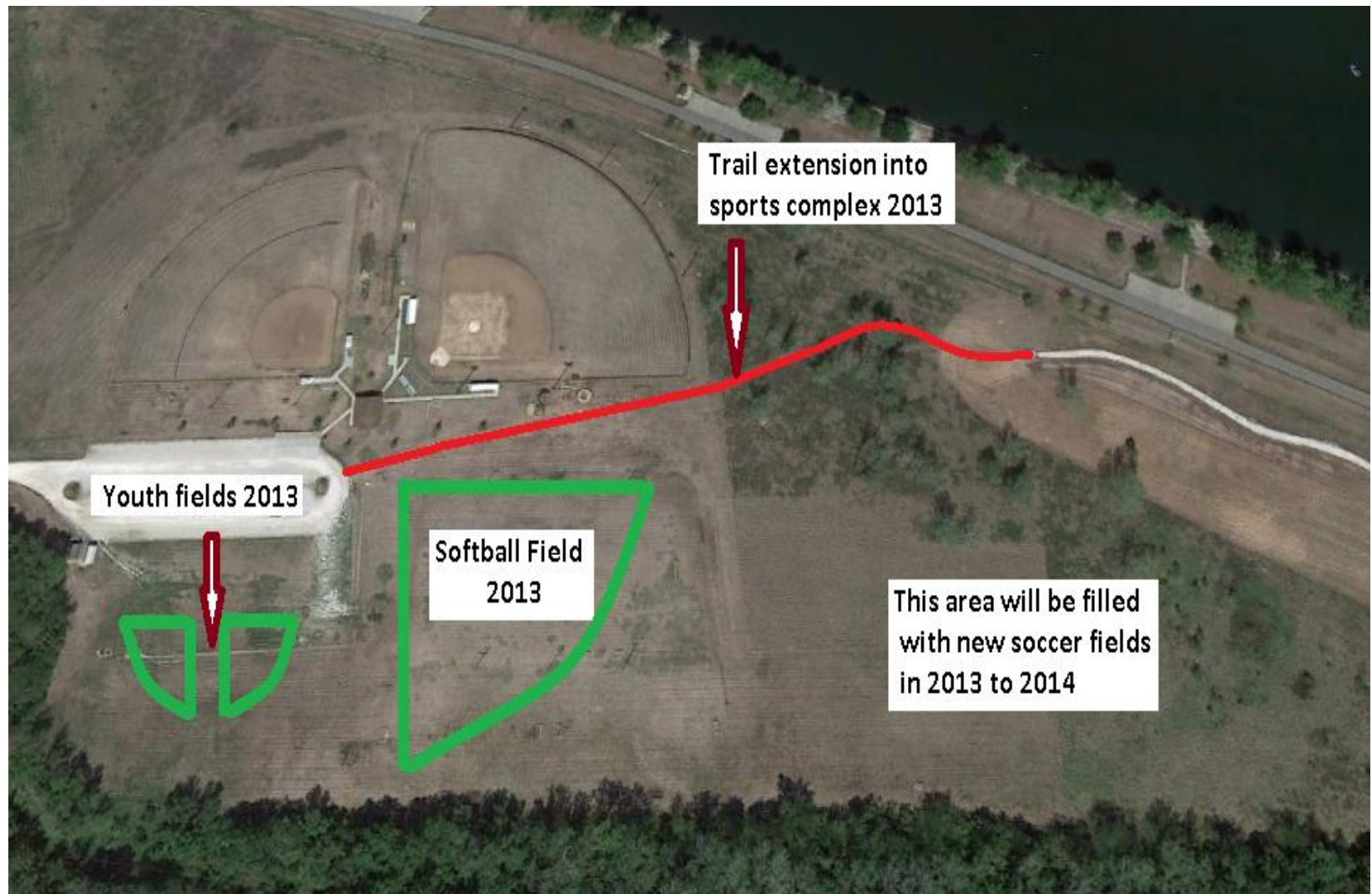






D – Bledsoe Ferry Sports Complex





E – Shawnee Bend Golf Course

