

3RD ANNUAL

MISSOURI BICYCLE AND PEDESTRIAN FEDERATION

ACTIVE — *Transportation* — SUMMIT

AUGUST 10TH, 2018— JEFFERSON CITY, MO

"Bicycling, Walking, and Trails Mean Business in Missouri"

SPONSORED BY:





APBP is a community of practitioners working to create more walkable, bikeable places. We foster peer knowledge sharing, advance technical expertise, and support the professional development of our members who work in government, consulting firms, and in non-profit organizations in the fields of transportation planning and engineering, urban design and planning, public health and active living.

We have a variety of membership categories sure to fit your needs! Choose from these options:

[Become a member now!](#)

Professional - \$120/year: This membership is for a person employed by a local, state or federal government, a corporation or consulting firm, a college or university, or as an independent consultant.

Advocate - \$88/year: This membership is for staff or volunteers of an advocacy organization or advisory committee.

Young Professional - \$50/year: This membership is for a person who has just graduated or has been in practice less than 3 years. This category is available for the first three years of practice and then transfers to the Professional Membership category.

Student - \$30/year: This membership is for full-time students in engineering, planning, landscape architecture, urban design, safety and promotion, health, law enforcement and other related curricula.

Retired - \$30/year: Retired bicycle and pedestrian professionals interested in maintaining connections in the field.

Group Memberships: Groups of five or more people from the same professional or advocacy organization may join together as a group and save 20% on annual membership dues.

Benefits of Membership

- Network with an online community of over 1,200 professionals who share a passion for bicycle and pedestrian transportation and a vision for the role that sustainable transportation can play in communities.
- Participate in APBP's dynamic and acclaimed listserv, open only to our members
- Save money with reduced fees for APBP's monthly webinars, publications and biennial conference
- Stay informed with our weekly e-newsletter
- Search the Career Center for job openings
- Participate in the annual APBP Mentor Program
- Gain access to scholarship programs for professional meetings

Find out more or join APBP-Missouri at <https://www.apbp.org/group/Missouri>

Contacts for the Missouri Chapter:

Paul Wojciechowski – President paulw@altaplanning.com, 314-952-8570

Derrick Estell - Vice President destell@springfieldmo.gov, 417-864-1971

2018 Missouri Active Transportation Summit Schedule Overview

8:00 **Registration Open**, Jefferson City Police Department Building, 401 Monroe St., southwest entrance lobby, near PD Classroom

9:00 to 9:45 **Opening Plenary Session**, PD Classroom

Welcome - MoBikeFed - Jefferson City/CAMPO - APBP MO Chapter – Department of Health & Senior Services/Missouri Livable Streets - Missouri Division of Tourism Director Ward Franz; Thanks to Organizing Committee members

Plenary Speech: **David Wright, Bentonville Parks & Recreation**
“Building the Northwest Arkansas Trails and Bikeway System”

10:00-10:45 1st breakout session

(PD Classroom)	(City Hall - Council Chambers)	(Mobile Session/Outdoors)
<p>Chase A. Crawford, Associate Commissioner, Hickory County</p> <p>Jerany Jackson, Great River Engineering</p> <p>Katie Gibson, Boonville Convention and Visitors Bureau</p> <p><u>Panel: The Making of the Pomme de Toure; Boonville's Lessons Learned as Trail Community</u></p>	<p>Elizabeth Bowen, Project Manager, Northwest Arkansas Regional Planning Commission</p> <p><u>Economic and Health Benefits of Bicycling in Northwest Arkansas: Results of a New Economic Impact Study</u></p>	<p>Taylor March, Advocacy and Education Manager, Trailnet</p> <p><u>How To: Pop-Up Demonstrations for Liveable Streets</u></p> <p>(Outside mobile session—meet Taylor near the outside doorway to the Police Classroom.)</p>

10:55-11:40 2nd breakout session

(PD Classroom)	(City Hall - Council Chambers)	(City Hall – Boone/Bancroft Room)
<p>Steve Myers, Mayor, Pacific MO</p> <p>Lisa Troglio, President, Pacific River Walk Trail</p> <p>Braden Horst, President, Joplin Trails Coalition</p> <p>Josh Adams, Missouri Trail Project Coordinator</p> <p><u>Panel: The Pacific River Walk Trail and Connections to St. Louis and the Ozark Trail; Joplin Trails Coalition: Progress & Promise; Creating the Missouri Trails Project</u></p>	<p>Mandy Buettgen-Quinn, Springfield Public Works</p> <p>David Hutchison, Springfield Public Works (retired) and Association of Pedestrian and Bicycle Professionals – Missouri Chapter</p> <p><u>Panel: Springfield's Action Plan for a Pedestrian-Friendly Community; Springfield's Bike Share Program</u></p>	<p>Wes Minder, Bike KC Plan Implementation Manager, City of Kansas City, Missouri</p> <p>Ron Bentch, Program Manager, Missourians for Responsible Transportation</p> <p><u>Panel: The Line Creek Trail: Building an 8 mile trail that also serves as a primary bike commuting corridor; Announcing Missourians for Responsible Transportation</u></p>

11:40-12:10 **Networking Time**

12:10-12:50 **Lunch, Recognition of new/updated Complete Streets Communities, APBP Business Meeting, PD Classroom**

12:50-1:30 **Keynote Speech: Eric Schroeter, State Design Engineer, MoDOT**
“Bicycling, Walking, and MoDOT's Future”

1:50-2:30 **3rd breakout session**

(PD Classroom)	(City Hall - Council Chambers)	(City Hall – Boone/Bancroft Room)
Patty Cantrell , Community Wealth Building Director, New Growth Mac Vorce , Director, Warsaw Chamber of Commerce Sheridan Garman-Neeman , Economic Development Director, Kaysinger Basin Regional Planning Commission <u>Workshop: Map Your Trail Town Business Connection (Part 1 of 2)</u> <i>(Part 1 of two-part session)</i>	Nick Galla , Senior Project Manager, City of St. Charles Aaron Bartlett , Senior Transportation Planner with the Mid-America Regional Council <u>Panel: City of St. Charles Bicycle & Pedestrian Master Plan and Implementation; Greater Kansas City's Regional Pedestrian Policy Plan</u>	Ron Effland , State Bicycle & Pedestrian Coordinator, MoDOT Patrick Tuttle , Director, Joplin Convention and Visitors Bureau <u>The path to the adoption of Missouri US Bicycle Route 66; The Beginnings of US Bicycle Route 51 in Missouri</u>

2:40-3:20 **4th breakout session**

(PD Classroom)	(City Hall - Council Chambers)	(City Hall – Boone/Bancroft Room)
<u>Workshop: Map Your Trail Town Business Connection, continued (Part 2 of 2)</u> <i>(Part 2 of two-part session)</i>	Shawn Leight , CBB Transportation Engineers + Planners Jacque Lumsden , CBB Transportation Engineers + Planners Aaron Defenbaugh , Alta Planning & Design <u>The Downtown Multi-Modal Plan - St. Louis Redefined</u>	Greg Harris , Executive Director, Missouri Rock Island Trail, Inc. <u>Missouri Rock Island Trail – Status and Update</u>

3:30 to 4:30 **Concurrent walk and bike tours of Jefferson City** (See map of routes Inside Back Cover of this program; meet near the outside doorway to the Police Classroom)
 Note that you may be able to use the city's new SPIN Bike Share for the ride. You'll want to download & activate the SPIN app before the ride, and bring your own helmet.

4:30 to 5:00 **Summit wrap-up and social hour**
(J. Pfenny's Sports Grill & Pub, downtown @ 215 E High St.)

Detailed Session Schedule

REGISTRATION OPEN, 8:00am, Jefferson City Police Department Building, 401 Monroe St., southwest entrance lobby, near PD Classroom

PLENARY SPEECH, 9:00am-9:45am, PD Classroom



“Building the Northwest Arkansas Trails and Bikeway System”

David Wright

Director, Bentonville Parks & Recreation

David Wright, Bentonville Parks and Recreation Director, is a 20+ year veteran of the public parks and recreation field. Prior to joining Bentonville Parks and Recreation, Wright worked ten years with Fayetteville Parks and Recreation, as well as stints with Fayetteville Youth Center and the Memphis Parks Commission. He is a Certified Parks and Recreation Professional by the National Parks and Recreation Association and serves on multiple national boards and committees overseeing recreation

policy.

In 2008, Bentonville Mayor Bob McCaslin hired Wright to become Director of Bentonville Parks and Recreation, asking him to transform the department into a comprehensive Parks and Recreation system. Since that time, Wright has worked with many partners to open facilities including Orchards Park, Lawrence Plaza, the Bentonville Community Center, and more than 80 miles of trails including the Razorback Greenway and the Slaughter Pen Mountain Bike Park. In addition, Wright's department now offers more than 140 recreation programs per year serving more than 2,500,000 people annually. Under Wright's leadership, Bentonville Parks and Recreation has become a department generally recognized as one of the top municipal recreation departments in Arkansas and the Midwest.

Because of this leadership, trails and bikeways now form an integral part of Northwest Arkansas' culture, economy, and tourism base.

1st BREAKOUT SESSION, 10AM-10:45AM

Panel: The Making of the Pomme de Toure; Boonville's Lessons Learned as Trail Community (PD Classroom)

Chase A. Crawford, Associate Commissioner, Hickory County, Missouri

Jerany Jackson, Great River Engineering

Katie Gibson, Boonville Convention and Visitors Bureau

Making of the Pomme de Toure: How one of Missouri's most rural counties created a 100 mile bike route and bike tour event in south-central Missouri that highlights safe biking and ecotourism. The 100 mile route utilizes existing Hickory County road and bridge infrastructure, celebrates the rich and diverse natural environment, and creates economic development opportunities. while emphasizing the health benefits of an active lifestyle, educating the public about bicycle safety, as well as the history and geography of the scenic Pomme de Terre River system.

Boonville's Lessons Learned: As a Katy Trail community, Boonville has turned trail tourism into a vital part of the local economy. How did the community do it, what are lessons learned, what's new for 2018?

Chase A. Crawford, Hickory County Associate Commissioner, is the visionary behind the creation and promotion of the Pomme de Toure. Mr. Crawford is an auctioneer in a family business providing services all over the state of Missouri. A long time Hickory County resident, he has served as a Commissioner for the last two years.

Jerany Jackson is a licensed Landscape Architect working for Great River Engineering. She has been designing bicycle, pedestrian and trail projects for over 25 years in communities across the nation. Great River has worked with Hickory County on infrastructure projects for 15 years.

Katie Gibson has been the Tourism Director for the City of Boonville for the past 4 years and previously was on the Tourism Commission representing the Isle of Capri Casino Hotel for 3 years. Katie runs the new Visitor Center and Museum right next to the trailhead on the Katy Trail in Boonville.

Economic and Health Benefits of Bicycling in Northwest Arkansas: Results of a New Economic Impact Study

(City Hall - Council Chambers)

Elizabeth Bowen, Project Manager, Northwest Arkansas Regional Planning Commission

A network of shared use paved trails, including the Razorback Regional Greenway, and many mountain bike trails, like the Slaughter Pen Trail, have become an economic driver for the regional economy in Northwest Arkansas. Recent research into the economic impact and importance of the area's trail and bikeway system has yielded important data showing the economic and health benefits bicycling has had in Northwest Arkansas.

Communities in Southwest Missouri are now working to link into the NW Arkansas trail and bikeway system, partly because of the benefits they see the system is bringing to the economy of NW Arkansas.

Elizabeth Bowen is a Project Manager at the Northwest Arkansas Regional Planning Commission. She is the regional bicycle and pedestrian coordinator for NWARPC and works to coordinate efforts for the Commission of local Cities and Counties.

How To: Pop-Up Demonstrations for Liveable Streets

(Mobile Session/Outdoors – meet near outside door of PD Classroom)

Taylor March, Advocacy and Education Manager, Trailnet

Come learn hands-on how to create pop-up demonstrations that work to build community buy in, and reimagine how liveable a street can be. We will cover materials, permitting and planning, demonstration set up and tear down, data collection, and utilizing Missouri's new lending libraries. Using pop-up can work to build community buy in, engage residents in a meaningful way, and allow city officials and traffic engineers to test concepts prior to design. Our session will include an interactive component where we transform a nearby street for the afternoon. We will discuss lessons learned from recent demonstrations, and special considerations for large streets with high traffic volumes.

(Outside mobile session—meet Taylor near the outside doorway to the Police Classroom.)

Taylor March manages Trailnet's walking and biking advocacy campaigns and educational campaigns. Taylor's work centers on the framework that infrastructure solutions are the most effective way to eliminate traffic fatalities on our streets, and having a plan for where these infrastructure changes need to be made is essential for the St. Louis region. Taylor is a League-Certified Cycling Instructor, has worked with car-free commuting initiatives and education that targets infrastructure planning and community outreach. His past work with Trailnet's Safe Routes to School Program leverages parental and community involvement to promote and support physical activity. Before joining Trailnet, Taylor worked as a photovoltaic solar designer and project manager, and his passions for engineering, infrastructure, and the environment inform his work with the built environment. Taylor is a full time bicycling and walking commuter and a League-Certified Cycling Instructor. Taylor has years of previous experience as the service manager at bicycle shops, teaching weekly mechanics clinics, as well as holding certifications in bicycle frame building and design through the United Bicycle Institute in Ashland, Oregon.

2nd BREAKOUT SESSION, 10:55AM-11:40AM

Panel: The Pacific River Walk Trail and Connections to St. Louis and the Ozark Trail; Joplin Trails Coalition: Progress & Promise; Creating the Missouri Trails Project

(PD Classroom)

Steve Myers, Mayor, Pacific, Missouri

Lisa Troglio, President, Pacific River Walk Trail

Braden Horst, President, Joplin Trails Coalition

Josh Adams, Missouri Trail Project Coordinator

The goal of the Pacific River Walk Trail is to attach the River Walk trail located in Pacific, MO to the Great Rivers Greenway trail system in Eureka, MO to the east, and eventually to a trailhead on the Ozark trail to the southwest, possibly at Leasburg. Once completed, walking, hiking and biking enthusiasts will be able to hop on at the Arch and take the trail all the way to the Arkansas border, an over 600 mile trail. Our group has had fundraisers for the past four years to raise money to purchase property and we have successfully purchased 40 acres of property along the Meramec River, which Great Rivers Greenway has in turn, purchased from us. This is a huge step in making this a reality.

The Joplin Trail Coalition's 16-mile Ruby Jack Trail project is going on ten years and just keeps plugging away. Grants from MODOT, MODNR and local citizens keep us moving forward. We have completed up to 75% of the Ruby Jack Trail. Most recently we are working on three bridge upgrades, one with help from Pittsburg State University Construction Management students.

The Missouri Trails Project is an exciting initiative of the Missouri Park and Recreation Association working in cooperation with trail owners and land managers across Missouri, to map all trails in Missouri and make information about the trails available at VisitMissouriTrails.com.

Steve Myers is Mayor of Pacific, Missouri and instigator of many trail-related initiatives in the area.

Lisa Troglio is President of Pacific River Walk Trail. The Pacific River Walk Trail is focused on providing public access to a river front recreational area along the Meramec River in the Tri County region.

[Facebook.com/PRWTP](https://www.facebook.com/PRWTP)

Braden Horst has been involved with the Joplin Trail Coalition since 2008 and currently serves as president. Braden's bicycling history includes stints as a bicycle newspaper boy and an over-the-road truck driver with bicycle. He has bicycled in 48 states.

Josh Adams is Missouri Trail Project Coordinator. Missouri is home to thousands of miles of the nation's finest trails, ready for every kind of user to experience and enjoy. For the first time ever, the state's trail managers and trail enthusiasts have come together in the Missouri Trail Alliance to create one place for you to discover all these trails via the Missouri Trails Project. Visit the Project's web page and find a Missouri trail near year at VisitMissouriTrails.com.

Panel: Springfield's Action Plan for a Pedestrian-Friendly Community; Springfield's Bike Share Program

(City Hall - Council Chambers)

Mandy Buettgen-Quinn, Springfield Public Works

David Hutchison, Springfield Public Works (retired) and Association of Pedestrian and Bicycle Professionals – Missouri Chapter

The initial phase of Springfield's pedestrian safety campaign, SGF Yields, aims at increasing driver compliance at crosswalks. When better driver compliance is achieved, the focus will shift to encouraging pedestrians to use crosswalks, rather than crossing mid-block.

In recent years, pedestrian fatalities have increased dramatically, both nationally and locally. SGF Yields is Springfield's response to help reduce that trend. The campaign's strategy is built around positive mental association and positive self-image, rather than "scare tactics." SGF Yields utilizes unique pedestrian statues, heart-shaped pedestrian signs and other intuitive means of communication to help make Springfield Driver's more aware of the law—and more importantly, to buy into doing the right thing—and feel good about it.

Springfield has implemented a Bike Share system this Summer. What were the obstacles and opportunities, how the program get started, and what are the initial results?

Mandy Buettgen-Quinn studied five years of transportation engineering at the Technical University of Berlin, Germany. She immigrated to the United States in 2005 and started with the City of Springfield Public Works Traffic Operations Department in 2006. She is the project manager of Springfield's new sidewalk construction program, specializes in crash analysis and crash remediation, and helps the city with public education and outreach, such as SGF Yields.

David Hutchison recently retired from the City of Springfield Public Works Department where he spent more than three decades in several roles relating to transportation planning, sign and marking operations, development review, traffic operations remediation projects and walk and bike projects. He led the Bicycle-Pedestrian Committee of the Traffic Advisory Board and played a key role in nearly every bicycle and pedestrian project and plan in the city. He served as advocacy director for the Springbike Bicycle Club, is a League of American Bicyclists Cycling Instructor, has organized and taught numerous bicycle safety courses, and served on the Board, Technical Committee, and Sustainable Transportation Advocacy Resource (STAR) Team of Ozark Greenways, Inc.

Panel: The Line Creek Trail: Building an 8 mile trail that also serves as a primary bike commuting corridor; Announcing Missourians for Responsible Transportation
(City Hall – Boone/Bancroft Room)

Wes Minder, Bike KC Plan Implementation Manager, City of Kansas City, Missouri

Ron Bentch, Program Manager, Missourians for Responsible Transportation

Completed in 2014, the Line Creek Trail in Platte County connects Riverside, Kansas City, Parkville and allows roughly 80,000 residents the ability to commute and also enjoy some of the Kansas City area's last untouched urban forested areas. The project involved multiple funding partnerships and connects the retail jobs areas to neighborhoods and also provides a way for residents to commute to downtown Kansas City. The trail includes grade separations and serves multiple public parks, community centers, and an elementary school. Presentation would include lessons learned from low water crossings, retrofitting box culverts, repurposing a private road as a shared use path, streambank protection, designing around nationally known historical sites, and acquiring easements.

Missourians for Responsible Transportation has recently been formed as a coalition of bicycle/pedestrian advocacy groups in four of the Missouri's largest metro areas: Trailnet (St. Louis), BikeWalkKC, PedNet (Columbia), and Ozark Greenways (Springfield). What is Missourians for Responsible Transportation, what are the organization's plans and goals, and how can you get involved?

Wes Minder is a licensed professional engineer who has designed the Line Creek and other trail systems in Kansas City and uses the corridor to commute weekly from southern Platte County to downtown Kansas City. Wes is currently the KCMO City Manager's Office Bike KC Plan Implementation Manager and is deeply involved in the current work to re-write the Bike KC and with many bicycle and pedestrian projects across the city.

Ron Bentch has recently been named Program Manager of the new group Missourians for Responsible Transportation.

Networking Time, 11:40AM-12:10PM

LUNCH SESSION AND KEYNOTE, 12:10PM-1:30PM, PD Classroom

Recognition of new & updated Complete Streets Policies

- Noel (2017)
- Cooter (2018)
- Monett (2018)
- Salem (2018)
- Hayti (2018)
- Moberly (2018)
- Kansas City (major update, 2017)
- Warsaw (special recognition as one of twelve “Best Complete Streets Initiatives of 2017” by National Complete Streets Coalition)

Association of Pedestrian & Bicycle Professionals – Missouri Chapter Business Meeting

Derrick Estell, City of Springfield, Association of Pedestrian & Bicycle Professionals – Missouri Chapter

KEYNOTE SPEECH



“Bicycling, Walking, and MoDOT's Future”

Eric Schroeter

State Design Engineer, MoDOT

Eric Schroeter is a graduate of the University of Missouri with a Bachelor's Degree in Civil Engineering and is a registered Professional Engineer in the State of Missouri. He has been with MoDOT for 26 years, beginning in the Sedalia Project Office.

During this time, he has served roles in Construction, Maintenance, District Administration, and the Design Division and currently serves as the State Design Engineer.

Schroeter represents MoDOT on several AASHTO committees including Council on Active Transportation and Committee on Design.

In his free time, he enjoys gardening, wood working, reading, and participating in activities with Boy Scout Troop 120.

3rd BREAKOUT SESSION, 1:50PM-2:30PM

Workshop: Map Your Trail Town Business Connection (Part 1 of 2)

(PD Classroom)

Patty Cantrell, Community Wealth Building Director, New Growth Community Development Corporation

Mac Vorce, Director, Warsaw Chamber of Commerce

Sheridan Garman-Neeman, Economic Development Director, Kaysinger Basin Regional Planning Commission

There are no cash registers on the trail. You need to actively connect your community to it in order to benefit. This session offers a hands-on approach to mapping the business linkages needed to maximize the community and economic development potential that trails offer. This map can stir interest and generate investment. This is an extended two-session workshop that brings the materials and techniques that New Growth uses with communities across west central Missouri to help super-charge the economic impact of their trail and outdoor recreation opportunities. You will leave the workshop with a framework for building trail town business connections in your community. The workshop will continue through both the 3rd and 4th Breakout Sessions.

Patty Cantrell joined the West Central Missouri Community Action Agency in 2017 to organize its new nine-county rural community development corporation. Launching in spring 2018, the New Growth CDC aims to build local ownership and lasting livelihoods by connecting community assets to market demand opportunities. Patty brings a career in community economic development and business journalism to this work. Her consulting firm Regional Food Solutions LLC worked from 2010-2017 with national clients to explore and develop business-to-business linkages in the emerging local and regional food sector. In 2012, Patty brought her food system insights and expertise to the TEDx Manhattan stage.

Earlier in her career, Patty spent 12 years developing regional food economy programs in Michigan, including the 10-county northwest Michigan Taste the Local Difference and Food and Farming Network initiatives. She served on the Michigan Food Policy Council and chaired the Michigan Good Food Charter infrastructure task force. Patty worked on national policy and communications initiatives in 2007-2009 as a Kellogg Food and Society Fellow. Patty holds a masters degree in business administration from Drury University in Springfield, MO, and bachelors' degrees in economics and political science from the University of Missouri-Columbia. Her background includes a Fulbright Scholarship to study economic systems in Europe, and newspaper and magazine work as a business journalist.

Mac Vorce, director Warsaw Chamber of Commerce, is an avid mountain biker who has served as Director of Parks for Warsaw, Missouri and founded Truman Lake Bikes in Warsaw. Warsaw has been called one of the best rural towns for bicycling and walking in the U.S. The city's Complete Streets Policy was recently named one of the 12 best in the U.S. for 2017.

Sheridan Garman-Neeman, Economic Development Director for the Kaysinger Basin Regional Planning Commission which serves seven counties in West Central Missouri is passionate about rural development and creating job opportunities in the region. She has a strong interest in economics, entrepreneurial ecosystems, rural development, and policy as it relates to rural development and rural health. Sheridan Garman-Neeman is currently heading up a regional trail planning effort for the Kaysinger Basin region that seeks to convene current trail development efforts and to assist cities in economic development planning surrounding their trail systems.

Panel: City of St. Charles Bicycle & Pedestrian Master Plan and Implementation; Greater Kansas City's Regional Pedestrian Policy Plan

(City Hall - Council Chambers)

Nick Galla, Senior Project Manager, City of St. Charles

Aaron Bartlett, Senior Transportation Planner with the Mid-America Regional Council

Learn about the City of St. Charles Bicycle & Pedestrian Master Plan and implementation strategies. Creating a Master Plan is the first step to a successful bicycle & pedestrian community. However, once you have a Master Plan it can be overwhelming to put into action. This presentation will focus on how to implement a master plan to achieve a successful bicycle & pedestrian network. Strategies include prioritizing bike & pedestrian projects, combining bike & pedestrian improvements with other types of capital improvements projects like roads and utilities, and working with private developers to include bike & pedestrian improvements.

The Mid-America Regional Council (MARC), recognizes the essential role walkability plays in our regional multimodal transportation system. Walkability affects our access to transit, how we get to work and school, our health through exercise for both transportation and recreation, the quality of air we breath, our economic vitality, and our safety as vulnerable transportation users. Yet there is a tendency to under value pedestrian systems and even avoid pedestrian issues due to the challenges in balancing transportation modes.

MARC has been coordinating the development of a "Regional Pedestrian Policy Plan". With the support of the Bicycle Pedestrian Advisory Committee, community leaders, stakeholders and the public the new plan focuses on pedestrian issues that are crosscutting. The plan provides a regional vision and set of goals that link to multiple regional plans, policies and programs. This plan also offers a comprehensive overview and synthesis of local pedestrian challenges coupled with recommended policy strategies. This presentation will focus on the key findings of our regional and local inventories, the plan strategies and how the plan will be used to advance pedestrian issues. More info at <http://www.marc.org/pedplan>.

Nick Galla is Senior Project Manager for the City of St. Charles. He graduated with Civil Engineering degree from University of Missouri - Rolla (aka Missouri Science & Technology) in 2004. He is a licensed professional engineer with 14 years of experience including 3 years at the City. At the City, he manages capitol improvement projects like road and utility improvements and responsible for obtaining outside funding. Prior to his work with the City, he designed several shared use paths and ADA improvements along roadways and private developments.

Aaron Bartlett is a Senior Transportation Planner with the Mid-America Regional Council (MARC), the association of city and county governments and the metropolitan planning organization in the bi-state Kansas City region. His accomplishments include development and adoption of the local bicycle facility design guidelines of the Kansas City Chapter American Public Works Association, adoption of the Major Rivers Crossing Policy, Explore KC a regional outreach campaign and Safety Ambassadors a public-safety program devoted to children. More recently, he led the development of the Greater Kansas City Regional Bikeway Plan and he is currently finishing work on the Regional Pedestrian Policy Plan. Mr. Bartlett is a certified instructor of the National Safe Routes to School Course, which has taught on numerous occasions. Mr. Bartlett holds Masters of Urban Planning with a concentration in Transportation Planning from the University of Kansas, Lawrence, Kansas. He has been practicing in the field of urban planning since 1995 and is certified by the American Institute of Certified Planners.

The path to the adoption of Missouri US Bicycle Route 66; The Beginnings of US Bicycle Route 51 in Missouri

(City Hall – Boone/Bancroft Room)

Ron Effland, State Bicycle & Pedestrian Coordinator, MoDOT

Patrick Tuttle, Director, Joplin Convention and Visitors Bureau

Bicycle touring and tourism is one of the primary reasons that communities across Missouri develop and promote regional, statewide, and national bicycle touring routes. Bicycle tourists spend more per day and spend more days per trip in a given area—making them an attractive demographic for communities working to ramp up their local tourism initiatives. U.S. Bicycle Routes that cross Missouri are our “interstate freeway corridors” of cross-state bicycle tourism and are an important part of the story of bicycle touring and tourism in Missouri.

We will give an overview of the U.S. Bicycle Route System across the U.S. and the several existing and potential future USBR routes across Missouri. We will discuss the multi-year journey to submit the Missouri US Bicycle Route 66 application to AASHTO, the national group that oversees the routes. We began with the Bicycle Route 66 route developed by Adventure Cycling and will talk about the the route refinement steps we took to create USBR 66 starting with that pre-existing route. We will detail the process of obtaining letters of support from communities along the route and some of the lessons learned. We will show photos from the USBR 66 taken with the cross state bike ride, BigBAM, which crossed the Missouri USBR 66 route in June 2018.

We will also discuss the status of the newest Missouri US Bicycle Route, currently under development: USBR 51, a route from New Orleans to Bentonville, thru Springfield, Sedalia, and northward to Minneapolis.

Ron Effland, PE, LAB LCI #4207, is MoDOT's State Bicycle and Pedestrian Coordinator. Ron has worked for MoDOT for over 25 years. For the last six years, Ron has served as the state's “Non-Motorized Transportation Engineer,” or as Ron refers to himself, the “state bike-ped coordinator.” Ron's job involves writing statewide policies and procedures related to bicycle and pedestrian infrastructure, but more importantly, efforts to change the culture of transportation from one that has traditionally been exclusively about cars.

Patrick Tuttle, CDME, is director of Joplin Convention and Visitors Bureau. Patrick started at the Joplin CVB just weeks before the May 22, 2011 EF-5 tornado ripped through one-third of his community. Patrick was in the United States Air Force for 20 years, where he served in the Office of Protocol at various command levels. This afforded him the opportunity to manage events on three continents and four countries.

He has been in events and meetings management nearly his entire life; certainly since 6th grade. He has been training and writing on the profession since retiring from the Air Force in 1995. Prior to his current position with the City of Joplin he managed profit and not-for-profit events and taught employee development at a junior college.

4th BREAKOUT SESSION, 2:40PM-3:20PM

Workshop: Map Your Trail Town Business Connection (Part 2 of 2)

(PD Classroom)

Continuation of the extended two-session workshop designed to help citizens and leaders of communities across Missouri to help super-charge the economic impact of their trail and outdoor recreation opportunities.

See the full workshop description under 3rd Breakout Session for the full description.

The Downtown Multi-Modal Plan - St. Louis Redefined

(City Hall - Council Chambers)

Shawn Leight, CBB Transportation Engineers + Planners

Jacque Lumsden, CBB Transportation Engineers + Planners

Aaron Defenbaugh, Alta Planning & Design

The planning team will discuss the process, engagement and concepts for developing a multifaceted Multi-Modal Plan for Downtown St. Louis that incorporated considerations of numerous active planning efforts for a comprehensive plan for enhancing St. Louis for biking, walking and using transit.

Shawn Leight PE, PTOE, PTP, is Vice President and COO at CBB Transportation Engineers + Planners, Immediate Past International President of the Institute of Transportation Engineers (ITE), and Adjunct Professor of Transportation Engineering at Washington University in St. Louis. Shawn is a 1993 graduate of the United States Military Academy at West Point and lives in St. Louis.

Jacque Lumsden is a transportation planner for CBB Transportation Engineers and Planners in Saint Louis, MO. Jacque has an interest in enhancing community development thru strong multimodal transportation systems and well planned land uses. She has been involved with projects ranging from the development of neighborhood traffic calming plans, to Great Streets studies, working to promote sustainable transportation that supports users of all ages and abilities. Jacque has a Master of Urban Planning, a Bachelor of Science in Journalism, and a Bachelor of Arts in American Studies, all from the University of Kansas, in Lawrence, KS.

Aaron Defenbaugh, Alta Planning & Design, is an award-winning designer, who practices landscape architecture, planning, and urban design. His great passion is the development of beautiful communities that enhance relationships among humans and the rest of the natural world. Developing this ethic over an eleven-year career, Aaron's portfolio ranges from nation-wide master planning to pocket parks with experience in urban design, transit and bicycle master planning, complete streets, greenways and parks, green infrastructure, campus design, and corporate design.

Missouri Rock Island Trail – Status and Update

(City Hall – Boone/Bancroft Room)

Greg Harris, Executive Director, Missouri Rock Island Trail, Inc.

The Rock Island Trail is Missouri's next potential cross-state trail. A section from the Katy Trail to the outskirts of the Kansas City metro area is now open and in use. Another section, owned by Jackson County and the KCATA is under active development. A third major 144-mile section from Windsor to Beaufort has been offered as a donation to Missouri State Parks by AmerenUE, the current owner. Missouri State Parks is currently working through a planning process for acceptance of the 144 mile section with plans to announce the decision about whether to accept the donation of the 144-mile corridor by later in 2018.

What are the status and prospects for each of these sections of the Rock Island Trail?

Greg Harris is Executive Director of the Missouri Rock Island Trail, Inc. Greg was Executive Director for Development at Missouri S&T for 17 years. He was Resource Development Director for United Way of the Ozarks 10 years and was Co-Founder of Ozark Greenways in Springfield. He was a member of Springfield-Greene County Park Board, where he presented the BNSF rail-banking opportunity that became the 33 mile Frisco Highline Trail.

WALKING AND BIKING TOURS; SUMMIT WRAP-UP 3:30-5:00PM

Concurrent walking & biking tours of Jefferson City, 3:30pm-4:30pm

Meet near the outside entrance to the Police Department building for guided walking & biking tours. [See Map for Walking & Biking Tour Routes Inside Back Cover of this program.](#) *Note that you may be able to use the city's new SPIN Bike Share for the ride. You'll want to download & activate the SPIN app before the ride, and bring your own helmet.*

Walking and Biking Tours will be led by Jefferson City & CAMPO Staff:

David Bange, PE, has been City Engineer for the City of Jefferson since 2013. Mr. Bange began working for the City in 2003. Since that time he has held the positions of Design Engineer, Engineering Supervisor, and Engineering Division Director. Mr. Bange has over 12 years of experience in the field of engineering. He is a licensed professional engineer having earned his bachelor's degree in Civil Engineering from the University of Missouri, Columbia in 2002.

Alex Rotenberry, AICP, is Transportation Planner with the Capital Area Metropolitan Planning Organization (CAMPO) in Jefferson City, MO. He received his master's degree in City and Regional Planning at the University of Texas at Arlington in 2013 and began working for the MPO later that same year. He is a board member of the Missouri Chapter of the American Planning Association and is a member of the Missouri Livable Streets Advisory Committee.

Katrina Williams, GISP, AICP, is a Transportation Planner with the Capital Area Metropolitan Planning Organization (CAMPO) in Jefferson City, MO. She received bachelor's degree in Geography at the University of Missouri-Columbia. She assists with planning activities related to plan development and updates, GIS analysis, and general administration support within the MPO. She previously worked as a GIS Specialist/Regional Planner for the Mid-Missouri Regional Planning Commission in Ashland, MO, working on regional transportation planning, grant research, local/regional GIS technical support, and emergency management planning.

Summit wrap-up and social hour, 4:30-5:00pm

J.Pfenny's Sports Grill & Pub, downtown at 215 E High Street.

Walking and Biking Tours will end at J.Pfenny's; anyone who does not want to participate in the walking or biking tour can meet at J.Pfenny's on your own.

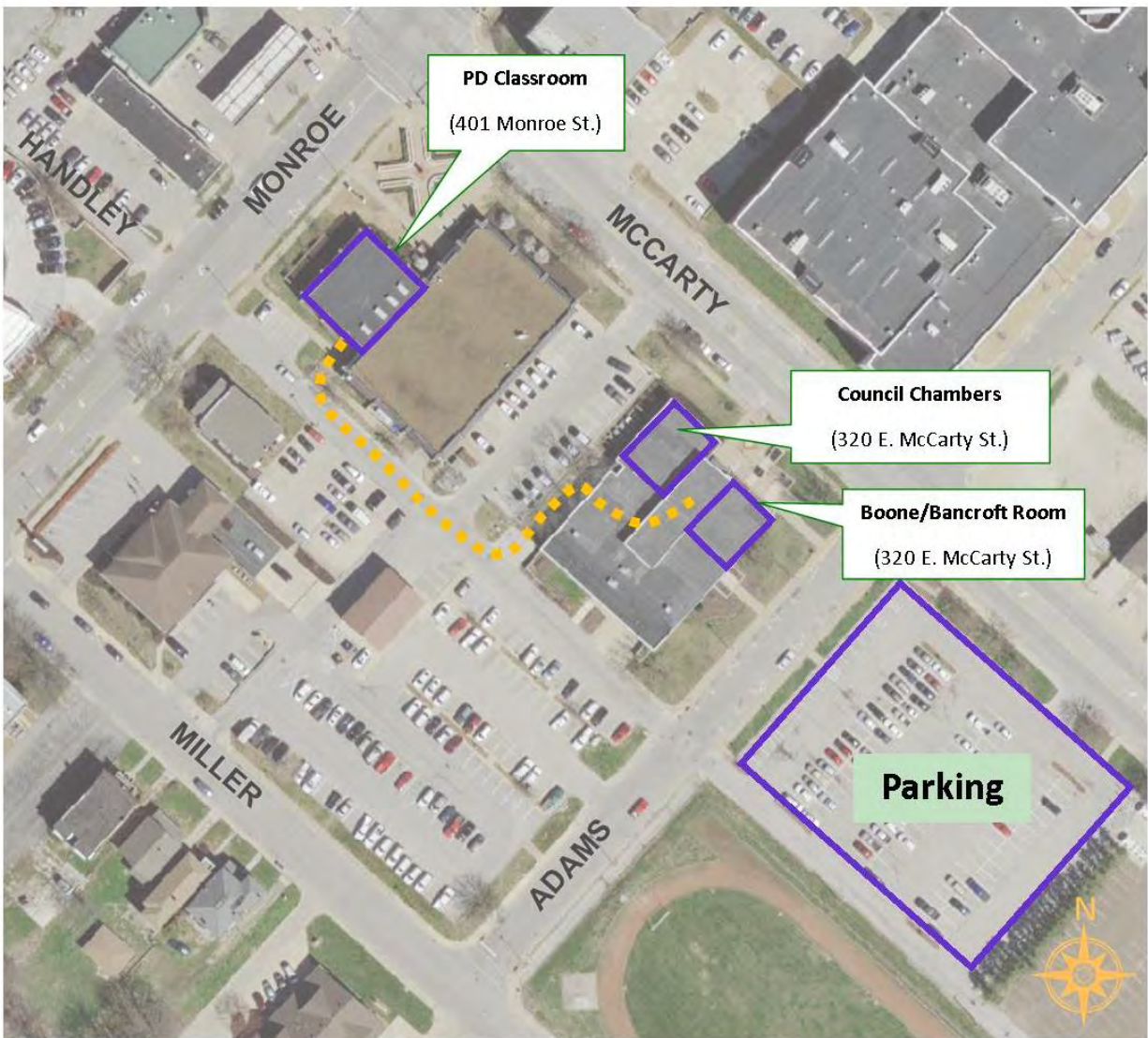
Many thanks to Jefferson City & CAMPO staff for organizing the walking & biking tours, and for providing the venue and facilities for the 2018 Summit.

THANK YOU TO THE 2018 SUMMIT ORGANIZING COMMITTEE

- David Bange, Jefferson City
- Kathy Craig, Missouri Department of Health and Senior Services
- Greg Harris, Missouri Rock Island Trail, Inc.
- Brent Hugh, Missouri Bicycle & Pedestrian Federation
- Derrick Estell, City of Springfield and Association of Pedestrian and Bicycle Professionals - Missouri Chapter
- David Hutchison, Association of Pedestrian and Bicycle Professionals - Missouri Chapter
- Chrysa Niewald, Missouri Rock Island Trail, Inc, and Missouri Bicycle & Pedestrian Federation
- Alex Rotenberry, CAMPO
- Michael Swan, City of Raytown and Missouri Bicycle & Pedestrian Federation
- Patrick Tuttle, Joplin Convention and Visitors Bureau
- Katrina Williams, CAMPO
- Paul Wojciechowski, Alta Planning & Design and Association of Pedestrian and Bicycle Professionals - Missouri Chapter



The Missouri Bicycle and Pedestrian Federation is a statewide coalition of bicyclists, walkers, runners, trail organizations and related businesses which represents over 50,000 Missourians and advocates on behalf of the state's two million ardent bicyclists and six million walkers.



Classrooms

PD Classroom: The PD Classroom is located at 401 Monroe St. and is part of the Jefferson City Police Department Building. Please enter on the southwest side, adjacent to the parking lot.

City Hall - Boone/Bancroft Room: The Boone/Bancroft Room is located at 320 E. McCarty St. on the upper level. You may enter on any side of this building, but for the purposes of this event, it is best to enter on the northwest corner near the parking lot (shown on diagram).

City Hall – Council Chambers: The Council Chambers are also located at 320 E. McCarty St. on the upper level, across the hall from the Boone/Bancroft Room.

Accessible restrooms are available in all locations.

Parking

Free parking is available in Lot 24, adjacent to city hall at the corner of Adams St. and McCarty St. This lot has signage stating a tag is needed, but that is not necessary for the day of the summit.

Registration/Check-in

Registration/Check-in will be held at the southwest entrance lobby to Jefferson City Police Department Building, 401 Monroe St.—near the entrance to the PD Classroom shown on the map.